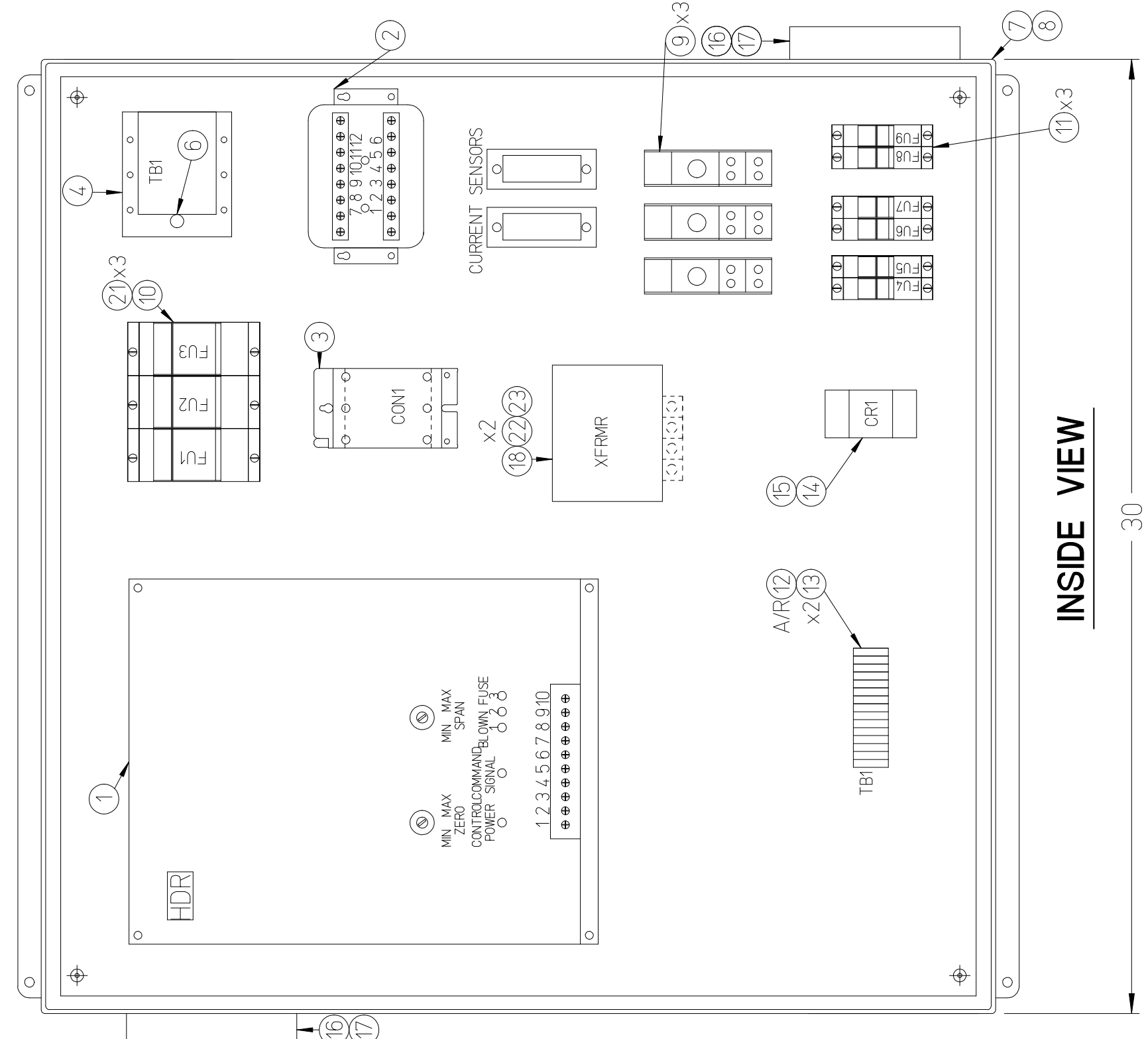
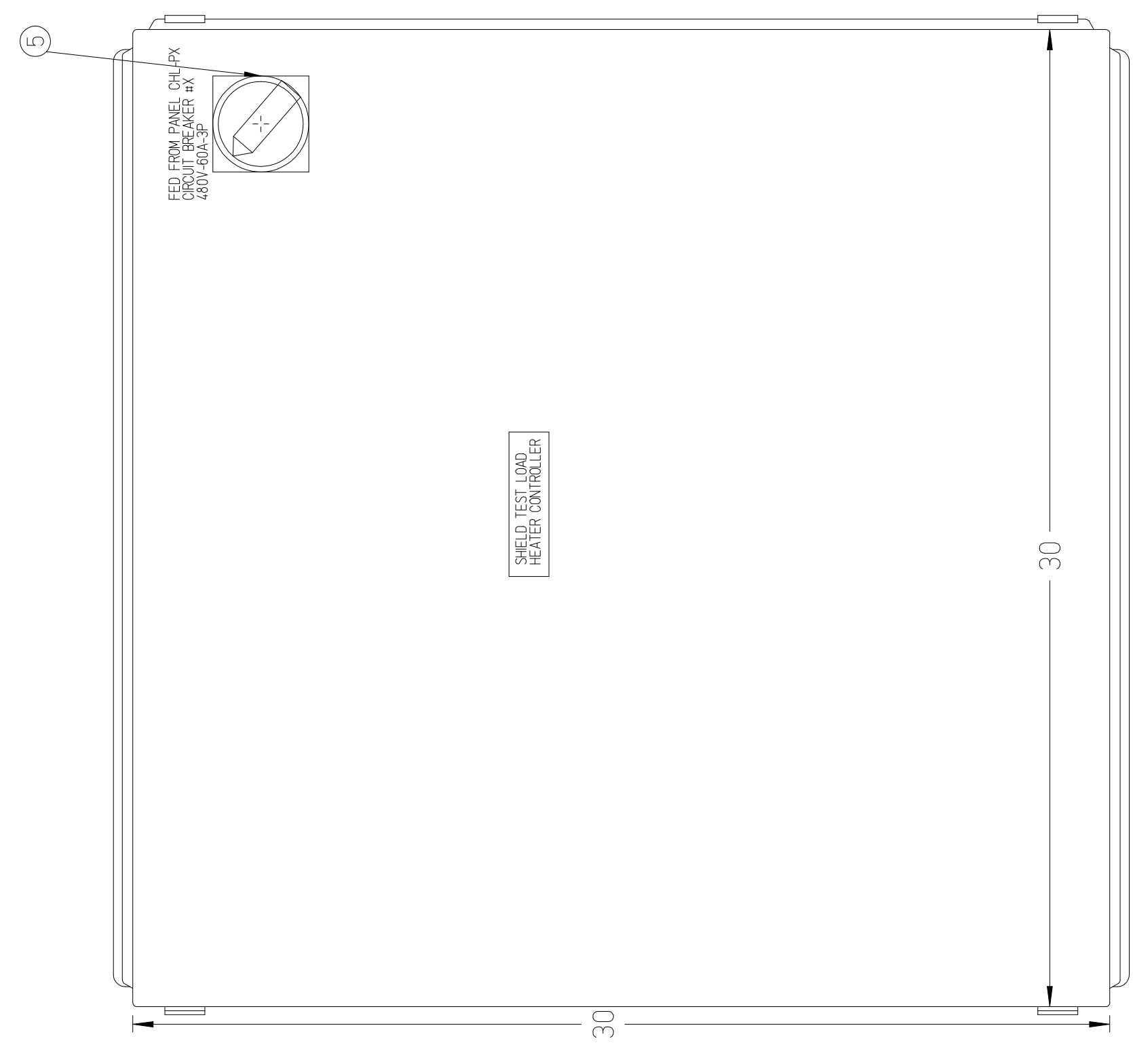
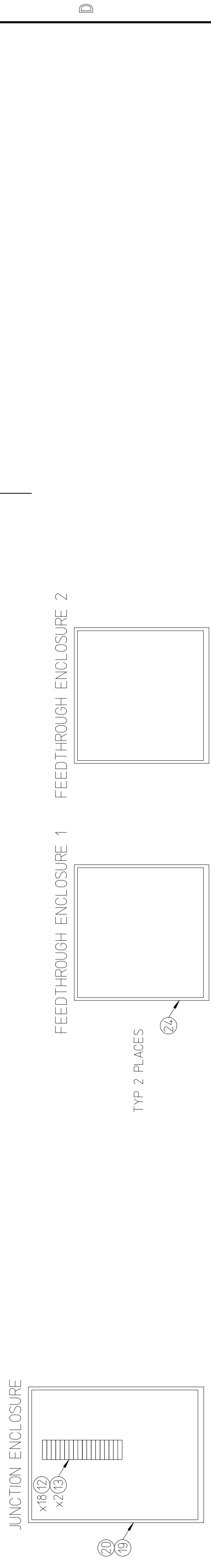


8 7 6 5 4 3 2 1

ZONE	REV	DESCRIPTION	DATE	APPROVED
A		CORRECTED BOX LAYOUT	2/27/2019	C SCANLON
		RDN 2/26/19		



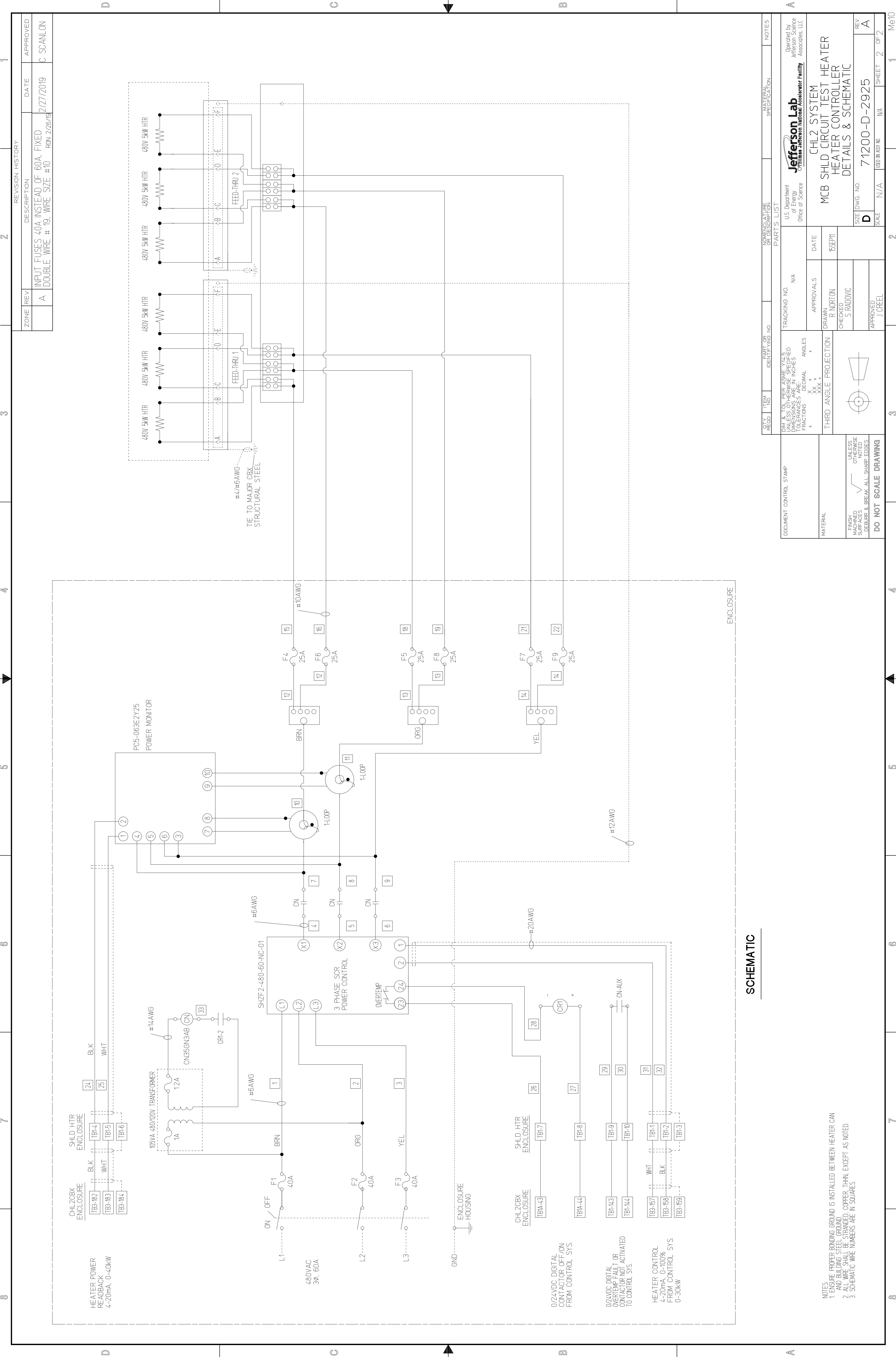
QTY	ITEM	IDENTIFYING NO.	PART OR NOMENCLATURE OR DESCRIPTION	MATERIAL SPECIFICATION	NOTES
2	24	AUSTIN AB-444G5B	4" x 4" x 4" GASKETED ENCLOSURE	MOUNTED OVER FEEDTHROUGHS	-
1	23	BUSS KTK-R-1	FUSE, 1A FAST BLOW	-	-
2	22	BUSS KTK-R-1/4	FUSE, 1/4A FAST BLOW	-	-
3	21	BUSS JKS-40	FUSE, 40A FAST BLOW	-	-
1	20	HOFFMAN A-10P08AL	ENCLOSURE PANEL, 10" x 8", AL	-	-
1	19	HOFFMAN A1008CHAL	ENCLOSURE, 10"L x 8"W x 4"D, AL	-	-
1	18	SQUARE D 9070-TF100D1	CONTROL TRANSFORMER, 480/120VAC 100 VA, W/ FUSEBLOCK	-	-
2	17	HOFFMAN A-FLT64	FILTER	-	-
2	16	HOFFMAN A-VK64	LOUVER	-	-
1	15	AB OR EO	RELAY, DPDT, 24VDC COIL	OR EQUIVALENT	-
1	14	AB OR EO	RELAY SOCKET, DPDT	OR EQUIVALENT	-
2	13	ALLEN-BRADLEY 1492-N36	END BARRIER	-	-
A/R	12	ALLEN-BRADLEY 1492-H1	TERMINALS, 50 PC/FT, 600V/30A WHT	-	-
3	11	BUSS CHCC2D	FUSE BLOCK, 2-POLE	WITH KTK-R-25A FUSES	-
1	10	BUSS J60060-3C	FUSE HOLDER	THREE POLE CONFIGURATION	-
3	9	SHAWMUT 63131	1-1/4"-OUT TERMINAL	-	-
1	8	HOFFMAN A-30P30	ENCLOSURE PANEL, 30"X30"	-	-
1	7	HOFFMAN A-303012LP	ENCLOSURE, 30"X30"X12"	-	-
1	6	ALLEN-BRADLEY 194R-R1	DISCONNECT SWITCH SHAFT	-	-
1	5	ALLEN-BRADLEY 194R-HSE	DISCONNECT SWITCH HANDLE	-	-
1	4	ALLEN-BRADLEY 194R-NND60P3	NON-FUSED DISCONNECT SWITCH	-	-
1	3	CUTLER-HAMMER CN35GN3AB	CONTACTOR, 3-POLE, 60A 120V COIL	-	-
1	2	OHIOSEMITRONICS PC5-063E2Y25	POWER TRANSUDUCER WITH 2 EXTERNAL CURRENT SENSORS	600V/3PH/100A/80KW	-
1	1	HDR POWER SYSTEMS SHZF2-480-60-NC-01	THREE PHASE, 480VAC, 60A SOR POWER CONTROLLER	-	-

FRONT VIEW

INSIDE VIEW

PARTS LIST		PARTS LIST	
TRACKING NO.	N/A	DATE	15SEP11
APPROVALS		CHECKED	S RADONIC
DRAWN	P NORTON	APPROVED	J CREEL
U.S. Department of Energy Jefferson Science Associates, LLC		U.S. Department of Energy Jefferson Science Associates, LLC	
CHL2 SYSTEM		CHL2 SYSTEM	
MCB SHLD CIRCUIT TEST HEATER		MCB SHLD CIRCUIT TEST HEATER	
HEATER CONTROLLER		HEATER CONTROLLER	
DETAILS & SCHEMATIC		DETAILS & SCHEMATIC	
SCALE	N/A	SHEET	1 OF 2
SIZE (DWG. NO.)	71200-D-2925	REV.	A

DOCUMENT CONTROL STAMP		PARTS LIST	
UNLESS OTHERWISE SPECIFIED DIMENSIONS ARE IN INCHES FRACTIONS DECIMAL ANGLES		U.S. Department of Energy Jefferson Science Associates, LLC	
THIRD ANGLE PROJECTION		CHL2 SYSTEM	
MATERIAL		MCB SHLD CIRCUIT TEST HEATER	
FINISH UNLESS OTHERWISE NOTED DEBURR & BREAK ALL SHARP EDGES		HEATER CONTROLLER	
DO NOT SCALE DRAWING		DETAILS & SCHEMATIC	
SCALE		SHEET 1 OF 2	
SIZE (DWG. NO.)		REV. A	



ZONE / REV	DESCRIPTION	DATE	APPROVED
A	INPUT FUSES 40A INSTEAD OF 60A, FIXED DOUBLE WIRE # 19, WIRE SIZE #10 RDN 2/26/19	2/27/2019	C SCANLON

QTY	ITEM NO.	PART OR IDENTIFYING NO.	NOMENCLATURE OR DESCRIPTION	MATERIAL SPECIFICATION	NOTES
PARTS LIST					
TRACKING NO.		N/A		DATE	
APPROVALS		DRAWN: P. NORTON		15SEP11	
CHECKED: S. RADOVIC		APPROVED: J. CREEL			
THIRD ANGLE PROJECTION		UNLESS OTHERWISE SPECIFIED DIMENSIONS ARE IN INCHES FRACTIONS ARE: DECIMAL ANGLES ARE: XXX.X		MATERIAL	
FINISH SURFACES UNLESS NOTED DEBURR & BREAK ALL SHARP EDGES		DO NOT SCALE DRAWING		SCALE: N/A	

**SCHEMATIC**

- NOTES:  
 1. ENSURE PROPER BONDING GROUND IS INSTALLED BETWEEN HEATER CAN AND BUILDING STEEL GROUND.  
 2. ALL WIRE SHALL BE STRANDED COPPER, THHN, EXCEPT AS NOTED.  
 3. SCHEMATIC WIRE NUMBERS ARE IN SQUARES.

**Jefferson Lab**  
 U.S. Department of Energy  
 Office of Science  
 Thomas Jefferson National Accelerator Facility

Operated by  
 Jefferson Science Associates, LLC

CHL2 SYSTEM  
 MCB SHLD CIRCUIT TEST HEATER  
 HEATER CONTROLLER  
 DETAILS & SCHEMATIC

SIZE (DWG. NO.)  
 D 71200-D-2925

REV. A

SHEET 2 OF 2