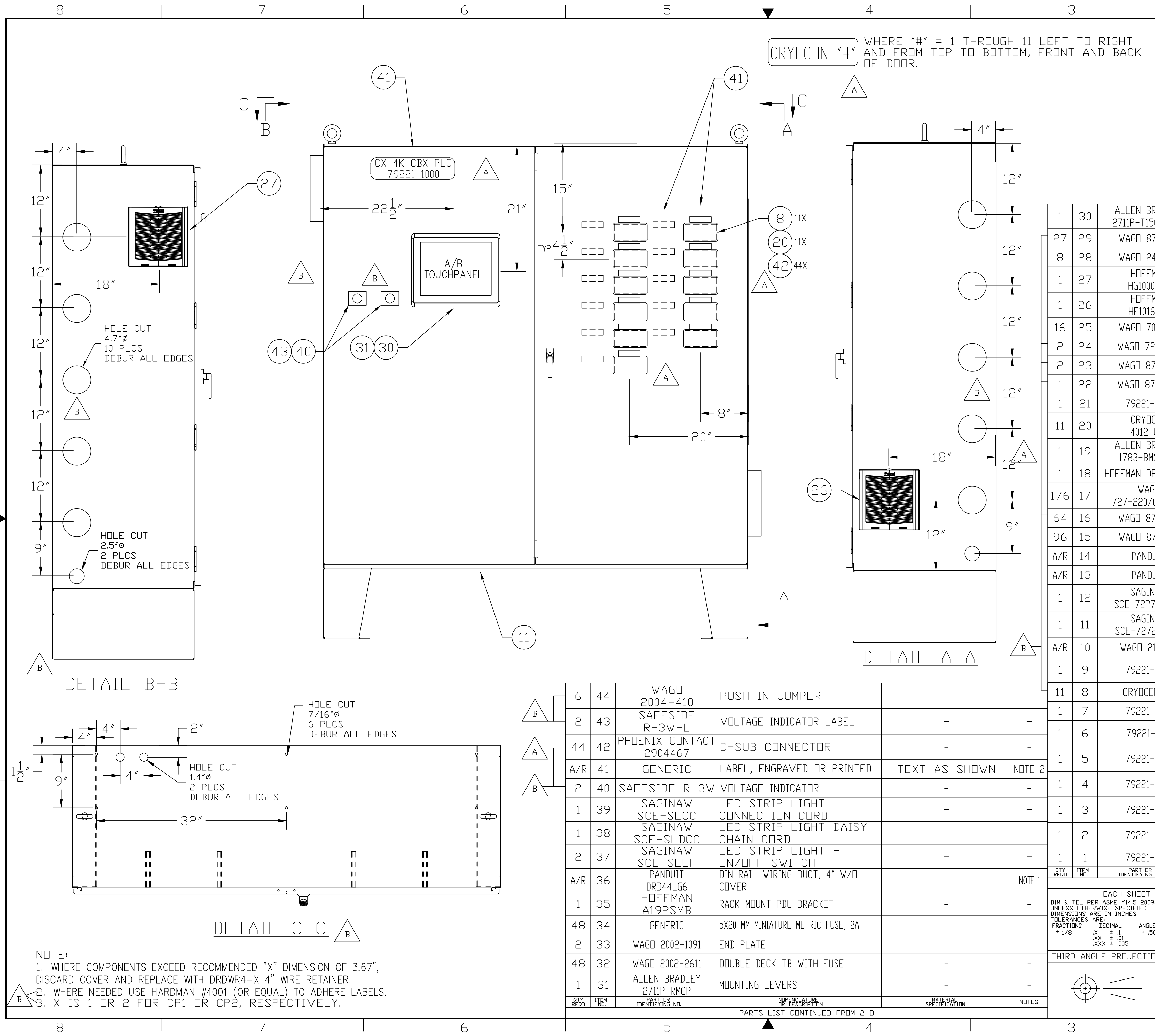
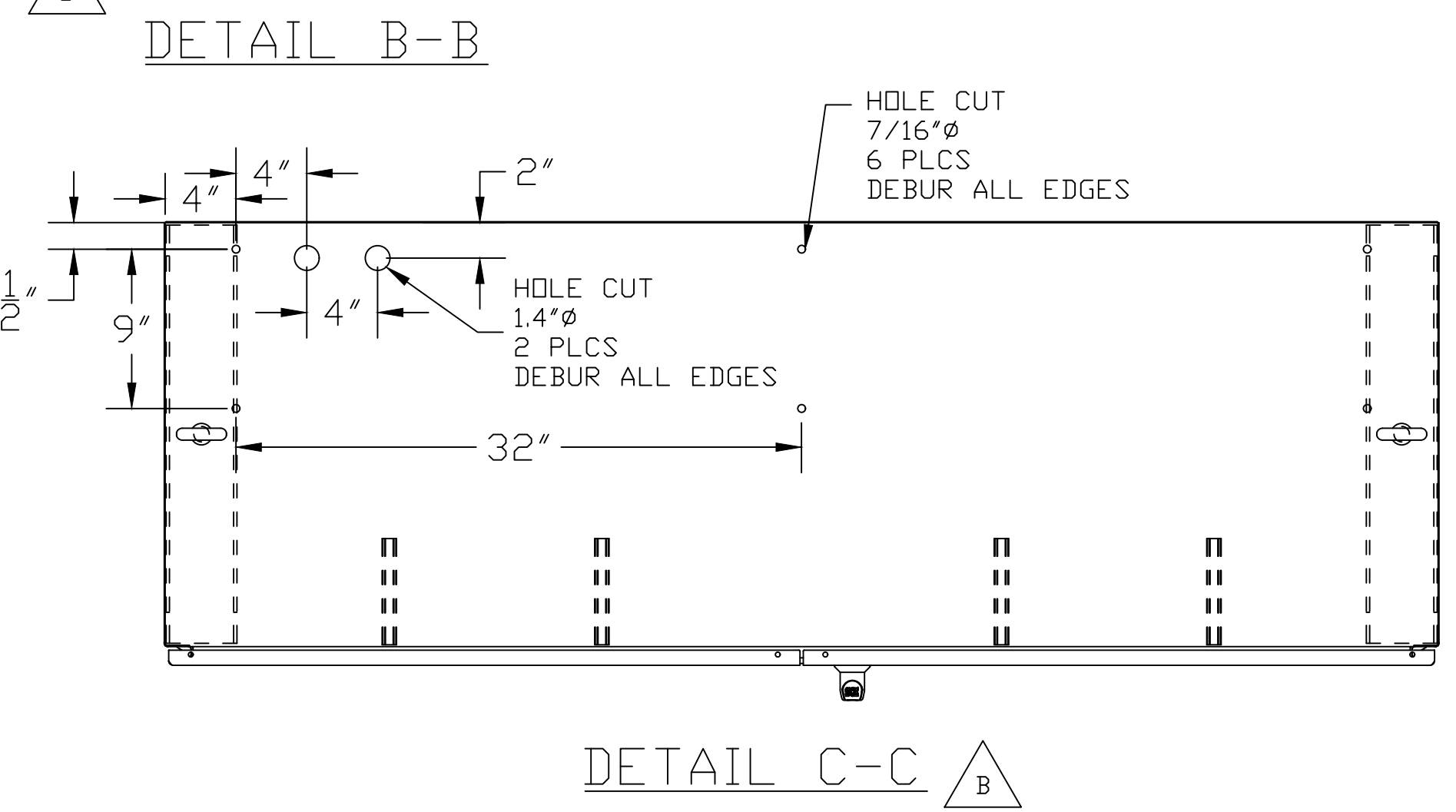


RESTRICTIVE NOTICE: These designs and drawings were prepared by Jefferson Science Associates, LLC, hereinafter the Contractor, under Contract No. DE-AC05-06OR21377 with the Department of Energy (DOE). All rights in the designs and drawings are reserved by DOE on behalf of the United States Government and the Contractor as provided in the Contract. You are authorized to use these works for governmental purposes but it is not to be released or distributed to the public. NEITHER THE GOVERNMENT NOR THE CONTRACTOR MAKES ANY WARRANTY, EXPRESS OR IMPLIED, OR ASSUMES ANY LIABILITY FOR THE USE OF THESE DESIGNS OR DRAWINGS. (This notice including this sentence must appear on any copies of these designs or drawings.)



REVISION HISTORY				
ZONE	REV	DESCRIPTION	DATE	APPROVED
ALL	-	INITIAL SUBMITTAL	TMM 30AUG17	30AUG17 R. NORTON
VAR	A	1. ADDED PART NO 40-42 TO PARTS LIST AND BODY OF DRAWING		
SHI 5-C		2. REVISED CRYOCON BACKGROUND IMAGE		
SHI 3-C		3. REVISED ITEM NO 19, WAS 16 PORT, TMM 03NOV17	03NOV17	R. NORTON
SH2 3-B				
SHI 6-B		1. ADDED PART NO 43, 44 & REPLACED 40 TO PARTS LIST AND BODY OF DRAWING		
SHI 6-C		2. REVISED SIDE VIEW AND ADDED TOP VIEW		
VAR	B	3. SWAPPED TERMINALS AND CHANGED POWER SUPPLY ASSEMBLY		
SH2 VAR		4. CORRECTED QTY'S OF ITEMS 8, 16, 20, 22-24, 29 AND 34.		
SHI 3			SS 30JAN18	30JAN18 R. NORTON
SH2 6-B				

QTY	ITEM NO.	PART OR IDENTIFYING NO.	NOMENCLATURE OR DESCRIPTION	MATERIAL SPECIFICATION	NOTES
1	30	ALLEN BRADLEY 2711P-T15C22A9P	PANELVIEW PLUS 7 PERFORMANCE MODEL, 15 INCH DISPLAY, WITH TOUCH SCREEN	-	-
27	29	WAGO 870-410	TERMINAL BLOCK JUMPER	-	-
8	28	WAGO 249-116	END STOP	-	-
1	27	HOFFMAN HG1000404	EXHAUST GRILLE	-	-
1	26	HOFFMAN HF1016414	120VAC FAN	-	-
16	25	WAGO 709-107	COMMONING WIRE	-	-
2	24	WAGO 727-206	4 LEVEL TB END BARRIER	-	-
2	23	WAGO 870-518	2 LEVEL TB END BARRIER	-	-
1	22	WAGO 870-568	3 LEVEL TB END BARRIER	-	-
1	21	79221-1009	TEMPERATURE DIODE INPUT	-	-
11	20	CRYOCON 4012-020	PANEL MOUNT KIT	-	-
1	19	ALLEN BRADLEY 1783-BMS20CA	20 PORT ETHERNET SWITCH	-	-
1	18	HOFFMAN DP1N481815	POWER DISTRIBUTION UNIT, 120V	-	-
176	17	WAGO 727-220/022-000	FOUR LEVEL TERMINAL BLOCKS	-	-
64	16	WAGO 870-551	THREE LEVEL TERMINAL BLOCKS	-	-
96	15	WAGO 870-501	TWO LEVEL TERMINAL BLOCKS,	-	-
A/R	14	PANDUIT DRD44LG6	WIRING DUCT, 6"x4" w/COVER	-	-
A/R	13	PANDUIT DRD44LG6	WIRING DUCT, 4"x4" w/COVER	-	-
1	12	SAGINAW SCE-72P72GALV	TWO DOOR FLOOR MOUNT TYPE 12 ENCLOSURE PANEL, 72x72	-	-
1	11	SAGINAW SCE-727224ULP	TWO DOOR FLOOR MOUNT TYPE 12 ENCLOSURE, 72x72x24	-	-
A/R	10	WAGO 210-112	35MM X 75MM DIN RAIL	-	-
1	9	79221-1002	24VDC INSTRUMENT POWER SUPPLY CONNECTIONS	-	-
11	8	CRYOCON 181	TEMPERATURE ELEMENT MONITOR	-	-
1	7	79221-1004	PLC ETHERNET CONNECTIONS	-	-
1	6	79221-1001	24VDC INSTRUMENT POWER SUPPLY ASSEMBLY	-	-
1	5	79221-1008	PLC MODULE TERMINATION DETAIL ANALOG OUTPUT	-	-
1	4	79221-1007	PLC MODULE TERMINATION DETAIL ANALOG INPUT SINGLE ENDED CURR.	-	-
1	3	79221-1006	PLC MODULE TERMINATION DETAIL RELAY OUTPUT	-	-
1	2	79221-1005	PLC MODULE TERMINATION DETAIL DIGITAL INPUT	-	-
1	1	79221-1003	PLC CHASSIS ASSEMBLY	-	-



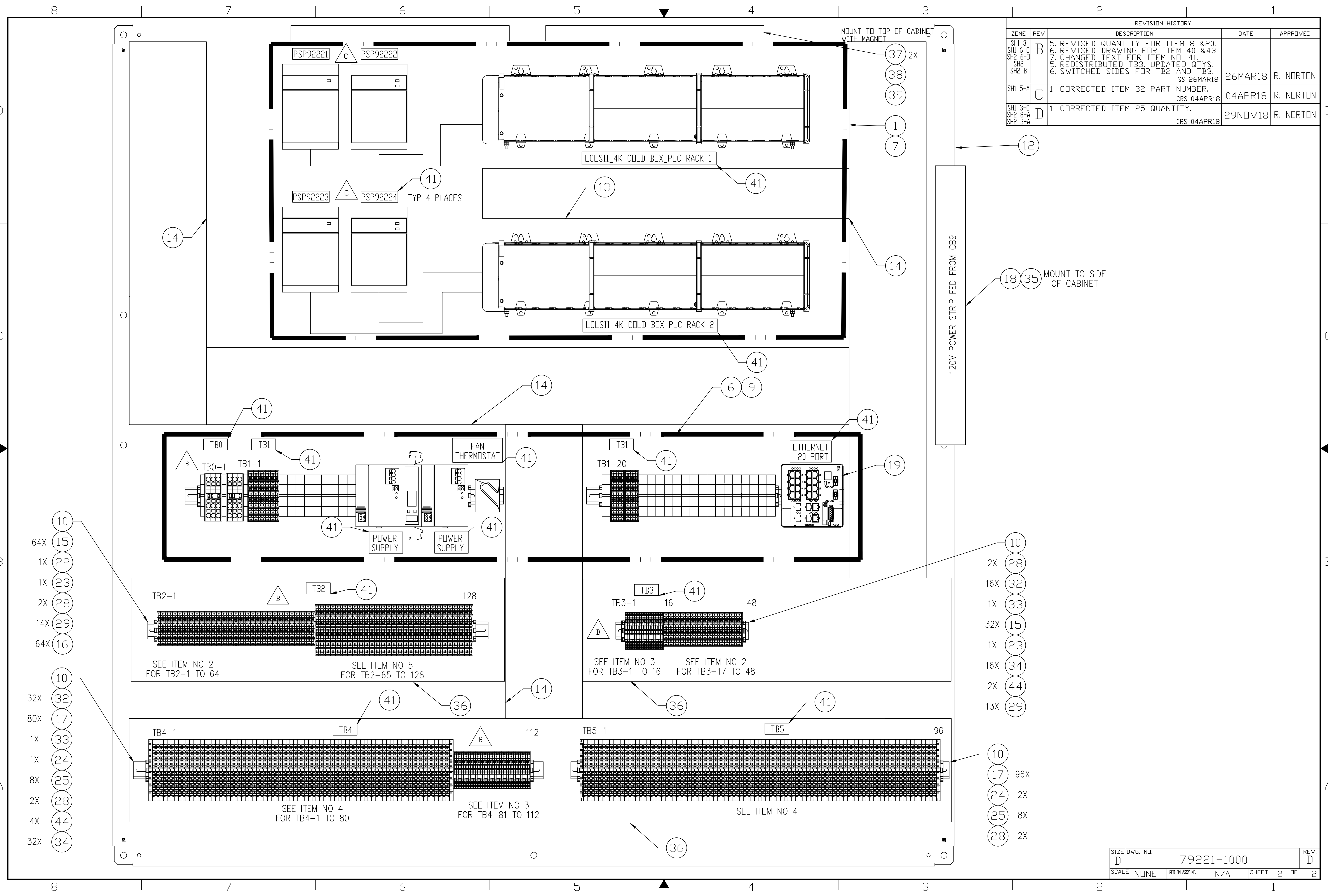
NOTE:
 1. WHERE COMPONENTS EXCEED RECOMMENDED "X" DIMENSION OF 3.67", DISCARD COVER AND REPLACE WITH DRDWR4-X 4" WIRE RETAINER.
 2. WHERE NEEDED USE HARDMAN #4001 (OR EQUAL) TO ADHERE LABELS.
 3. X IS 1 OR 2 FOR CP1 OR CP2, RESPECTIVELY.

QTY	ITEM NO.	PART OR IDENTIFYING NO.	NOMENCLATURE OR DESCRIPTION	MATERIAL SPECIFICATION	NOTES
6	44	WAGO 2004-410	PUSH IN JUMPER	-	-
2	43	SAFESIDE R-3W-L	VOLTAGE INDICATOR LABEL	-	-
44	42	PHOENIX CONTACT 2904467	D-SUB CONNECTOR	-	-
A/R	41	GENERIC	LABEL, ENGRAVED OR PRINTED	TEXT AS SHOWN	NOTE 2
2	40	SAFESIDE R-3W	VOLTAGE INDICATOR	-	-
1	39	SAGINAW SCE-SLCC	LED STRIP LIGHT CONNECTION CORD	-	-
1	38	SAGINAW SCE-SLDCC	LED STRIP LIGHT DAISY CHAIN CORD	-	-
2	37	SAGINAW SCE-SLOF	LED STRIP LIGHT - ON/OFF SWITCH	-	-
A/R	36	PANDUIT DRD44LG6	DIN RAIL WIRING DUCT, 4" W/D COVER	-	NOTE 1
1	35	HOFFMAN A19PSMB	RACK-MOUNT PDU BRACKET	-	-
48	34	GENERIC	5X20 MM MINIATURE METRIC FUSE, 2A	-	-
2	33	WAGO 2002-1091	END PLATE	-	-
48	32	WAGO 2002-2611	DOUBLE DECK TB WITH FUSE	-	-
1	31	ALLEN BRADLEY 2711P-RMCP	MOUNTING LEVERS	-	-

DIM & TOL PER ASME Y14.5 2009. UNLESS OTHERWISE SPECIFIED DIMENSIONS ARE IN INCHES.
 TOLERANCES ARE:
 FRACTIONS: ± 1/8, ± 1/16, ± 1/32, ± 1/64
 DECIMAL: .XX ± .01, .XXX ± .005
 ANGLES: ± .50°
 FINISH MACHINED SURFACES: UNLESS OTHERWISE NOTED DEBURR & BREAK ALL SHARP EDGES.
 DO NOT SCALE DRAWING.
 THIRD ANGLE PROJECTION.

EACH SHEET OF A MULTI-SHEET DRAWING SHALL ALWAYS CARRY THE SAME REVISION LEVEL.
 SEE PARTS LIST.
 U.S. Department of Energy Office of Science
Jefferson Lab
 Thomas Jefferson National Accelerator Facility
 Operated by Jefferson Science Associates, LLC
 LCLS II
 CRYOGENICS 4K COLD BOX SYSTEM CONTROL & TERMINATION ENCLOSURE DETAIL
 SIZE: DWG. NO. 79221-1000
 REV. D
 DRAWN: T.MCCOOL
 DATE: 30AUG17
 SCALE: NONE
 USED IN ASSY NO: N/A
 SHEET 1 OF 2

RESTRICTIVE NOTICE: These designs and drawings were prepared by Jefferson Science Associates, LLC, hereinafter the Contractor, under Contract No. DE-AC05-06OR21471 with the Department of Energy (DOE). All rights in the designs and drawings are reserved by DOE, on behalf of the United States Government and the Contractor as provided in the Contract. You are authorized to use these works for Governmental purposes but it is not to be released or distributed to the public. NEITHER THE GOVERNMENT NOR THE CONTRACTOR MAKES ANY WARRANTY, EXPRESS OR IMPLIED, OR ASSUMES ANY LIABILITY FOR THE USE OF THESE DESIGNS OR DRAWINGS. (This notice including this sentence must appear on any copies of these designs or drawings)



REVISION HISTORY				
ZONE	REV	DESCRIPTION	DATE	APPROVED
SHI 3 SHI 6-C SH2 6-D SH2 B	B	5. REVISED QUANTITY FOR ITEM 8 & 20. 6. REVISED DRAWING FOR ITEM 40 & 43. 7. CHANGED TEXT FOR ITEM NO. 41. 5. REDISTRIBUTED TB3, UPDATED QTYS. 6. SWITCHED SIDES FOR TB2 AND TB3. SS 26MAR18	26MAR18	R. NORTON
SHI 5-A	C	1. CORRECTED ITEM 32 PART NUMBER. CRS 04APR18	04APR18	R. NORTON
SHI 3-C SH2 8-A SH2 3-A	D	1. CORRECTED ITEM 25 QUANTITY. CRS 04APR18	29NOV18	R. NORTON

- 64X (15)
- 1X (22)
- 1X (23)
- 2X (28)
- 14X (29)
- 64X (16)
- 32X (32)
- 80X (17)
- 1X (33)
- 1X (24)
- 8X (25)
- 2X (28)
- 4X (44)
- 32X (34)

- 2X (28)
- 16X (32)
- 1X (33)
- 32X (15)
- 1X (23)
- 16X (34)
- 2X (44)
- 13X (29)
- 10 (17)
- 96X (24)
- 2X (25)
- 8X (28)
- 2X (28)

SIZE	DWG. NO.	REV.
D	79221-1000	D
SCALE	USED ON ASSY NO	SHEET
NONE	N/A	2 OF 2