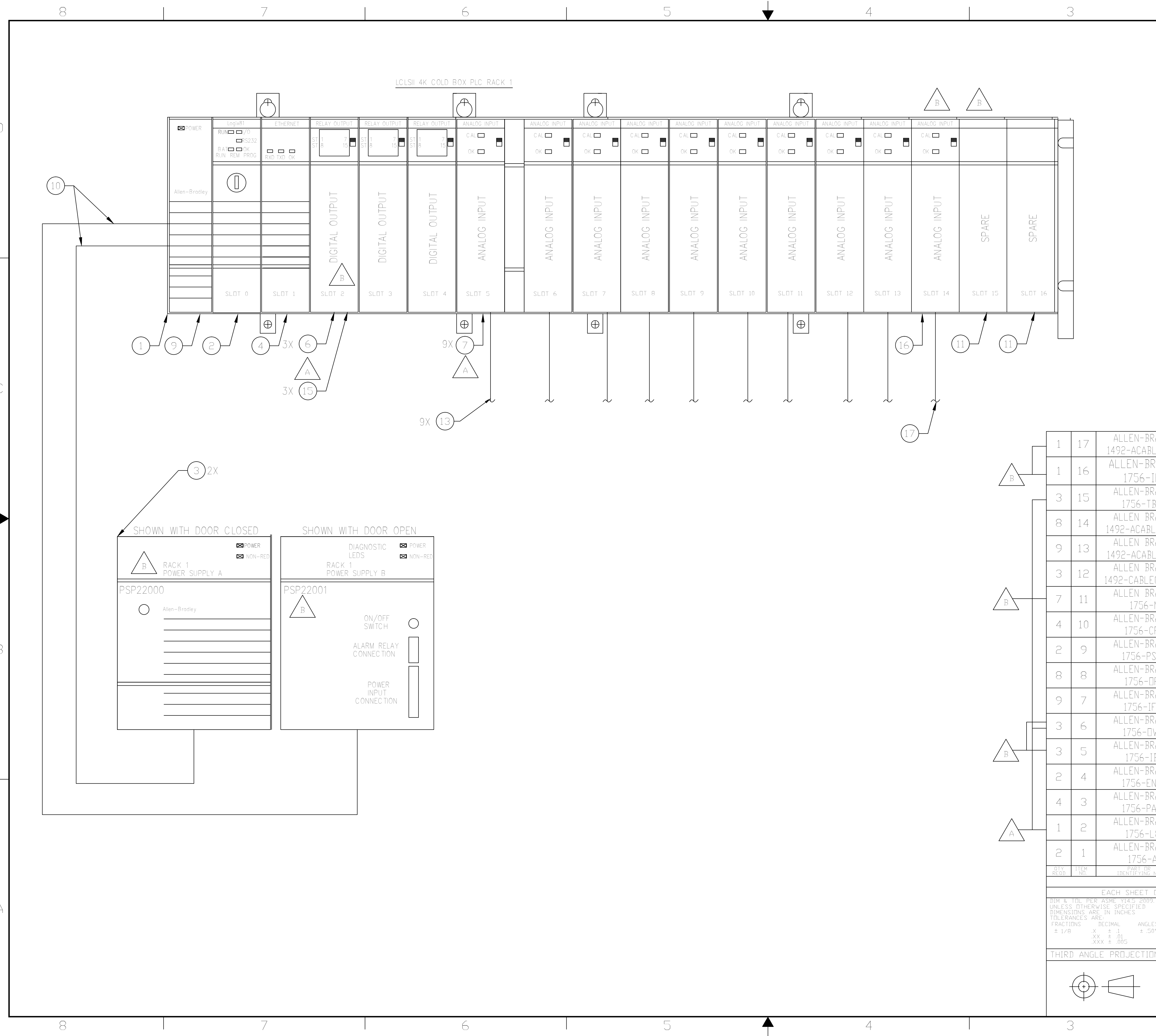


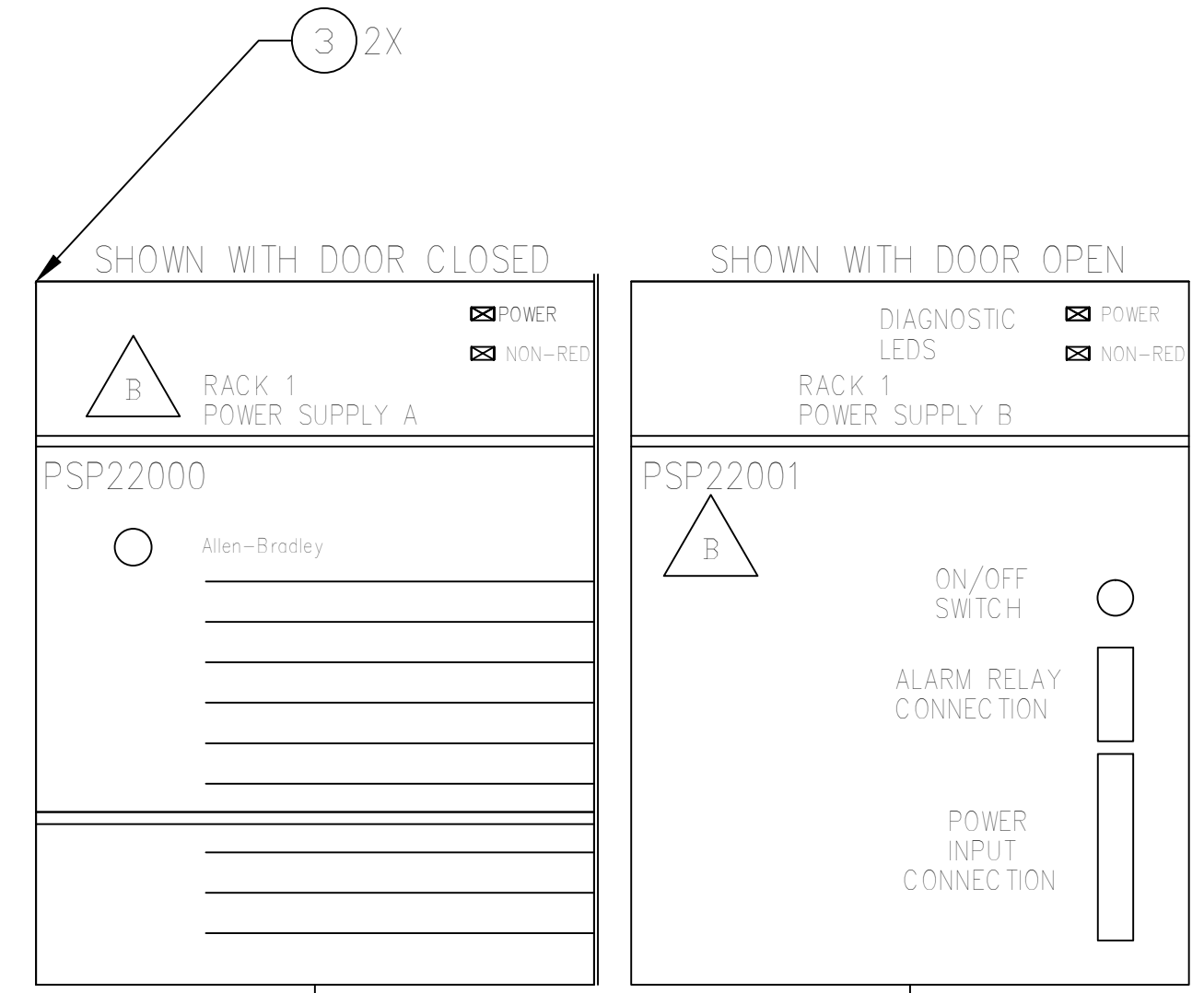
RESTRICTIVE NOTICE: These designs and drawings were prepared by Jefferson Science Associates, LLC, hereinafter the Contractor, under Contract No. DE-AC05-06OR21477 with the Department of Energy (DOE). All rights in the designs and drawings are reserved by DOE on behalf of the United States Government and the Contractor as provided in the Contract. You are authorized to use these works for Governmental purposes but it is not to be released or distributed to the public. NEITHER THE GOVERNMENT NOR THE CONTRACTOR MAKES ANY WARRANTY, EXPRESS OR IMPLIED, OR ASSUMES ANY LIABILITY FOR THE USE OF THESE DESIGNS OR DRAWINGS. (This notice including this sentence must appear on any copies of these designs or drawings.)



REVISION HISTORY				
ZONE	REV	DESCRIPTION	DATE	APPROVED
ALL	-	INITIAL SUBMITTAL	30AUG17	R. NORTON
SH1	A	1. REVISED THE ITEM QUANTITY IN DRAWING BODY AND LABEL.	01DEC17	R. NORTON
SH1	B	1. REVISED THE ITEM QUANTITY IN DRAWING BODY AND LABEL. 2. REMOVED A MODULE FROM SLOT 15 & CHANGED MODULE TYPE IN SLOT 14. 3. ADDED TAGS FOR POWER SUPPLIES. 4. ADDED 3RD DD, DI AND CABLES. 5. REMOVED TWO SLOT FILLERS.	30JAN18	R. NORTON

- 1 SOURCE VOLTAGE
- 2 TO DISCRETE INPUT

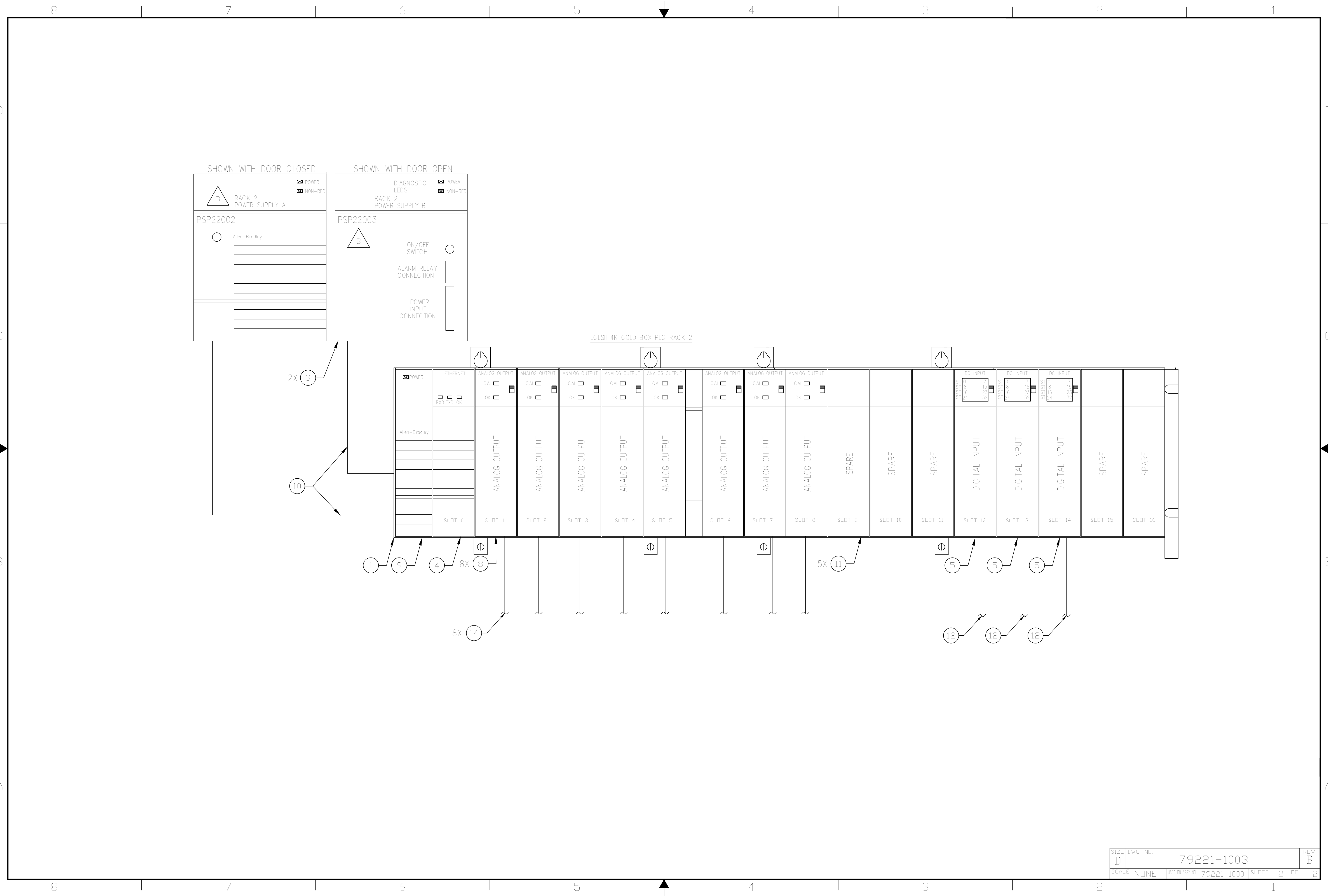
POWER SUPPLY SOLID STATE RELAY ALARM CONNECTION DETAIL



QTY	ITEM NO.	PART OR IDENTIFYING NO.	NOMENCLATURE OR DESCRIPTION	MATERIAL SPECIFICATION	NOTES
1	17	ALLEN-BRADLEY 1492-ACABLE025UA	PREWIRED ANALOG CABLE	-	-
1	16	ALLEN-BRADLEY 1756-IF16	PLC ANALOG INPUT MODULE, 16CH	-	-
3	15	ALLEN-BRADLEY 1756-TBS6H	PLC I/O 40 CONDUCTOR TERMINATOR	-	-
8	14	ALLEN-BRADLEY 1492-ACABLE025WB	PREWIRED ANALOG CABLE	-	-
9	13	ALLEN-BRADLEY 1492-ACABLE025UB	PREWIRED ANALOG CABLE	-	-
3	12	ALLEN-BRADLEY 1492-CABLE025TBCH	PREWIRED DIGITAL CABLE	-	-
7	11	ALLEN-BRADLEY 1756-N2	SLOT FILLER MODULE	-	-
4	10	ALLEN-BRADLEY 1756-CPR2	REDUNDANT POWER SUPPLY CABLES	W/ITEM 3 AS 1756-PA2R	-
2	9	ALLEN-BRADLEY 1756-PSCA2	REDUNDANT POWER SUPPLY CHASSIS ADAPTER MODULE	W/ITEM 3 AS 1756-PA2R	-
8	8	ALLEN-BRADLEY 1756-OF8H	PLC ANALOG OUTPUT MODULE, 8CH	-	-
9	7	ALLEN-BRADLEY 1756-IF16H	PLC ANALOG INPUT MODULE, 16CH	-	-
3	6	ALLEN-BRADLEY 1756-DW16I	PLC RELAY OUTPUT MODULE, 16CH	-	-
3	5	ALLEN-BRADLEY 1756-IB32	PLC DIGITAL INPUT MODULE, 32CH	-	-
2	4	ALLEN-BRADLEY 1756-EN2TR	PLC ETHERNET MODULE	-	-
4	3	ALLEN-BRADLEY 1756-PA75R	REDUNDANT POWER SUPPLY	-	-
1	2	ALLEN-BRADLEY 1756-L81E	PLC CPU, 3MB	-	-
2	1	ALLEN-BRADLEY 1756-A17	PLC 17-SLOT CHASSIS	-	-

DIM & TOL PER ASME Y14.5, 2009. UNLESS OTHERWISE SPECIFIED DIMENSIONS ARE IN INCHES. TOLERANCES ARE: FRACTIONS DECIMAL ANGLES ± 1/8 X ± .01 ± .50° XX ± .01 XXX ± .005  
 FINISH MACHINED SURFACES UNLESS OTHERWISE NOTED DEBURR & BREAK ALL SHARP EDGES  
 THIRD ANGLE PROJECTION  
 DO NOT SCALE DRAWING  
 DRAWN T.MCCOOL DATE 30AUG17  
 MATERIAL SEE PARTS LIST  
 US Department of Energy Office of Science  
**Jefferson Lab**  
 Thomas Jefferson National Accelerator Facility  
 Operated by Jefferson Science Associates, LLC  
 LCLS II CRYOGENICS 4K COLD BOX SYSTEM PLC CHASSIS ASSEMBLY  
 SIZE DWG. NO. 79221-1003 REV. B  
 SCALE: NONE SHEET 1 OF 2

RESTRICTIVE NOTICE: These designs and drawings were prepared by Jefferson Science Associates, LLC, hereinafter the Contractor, under Contract No. DE-AC05-06OR21477 with the Department of Energy (DOE). All rights in the designs and drawings are reserved by DOE on behalf of the United States Government and the Contractor as provided in the Contract. You are authorized to use these works for Governmental purposes but it is not to be released or distributed to the public. NEITHER THE GOVERNMENT NOR THE CONTRACTOR MAKES ANY WARRANTY, EXPRESS OR IMPLIED, OR ASSUMES ANY LIABILITY FOR THE USE OF THESE DESIGNS OR DRAWINGS. (This notice including this sentence must appear on any copies of these designs or drawings)



SIZE	DWG. NO.	REV.
D	79221-1003	B
SCALE: NONE	SHEET 2 OF 2	