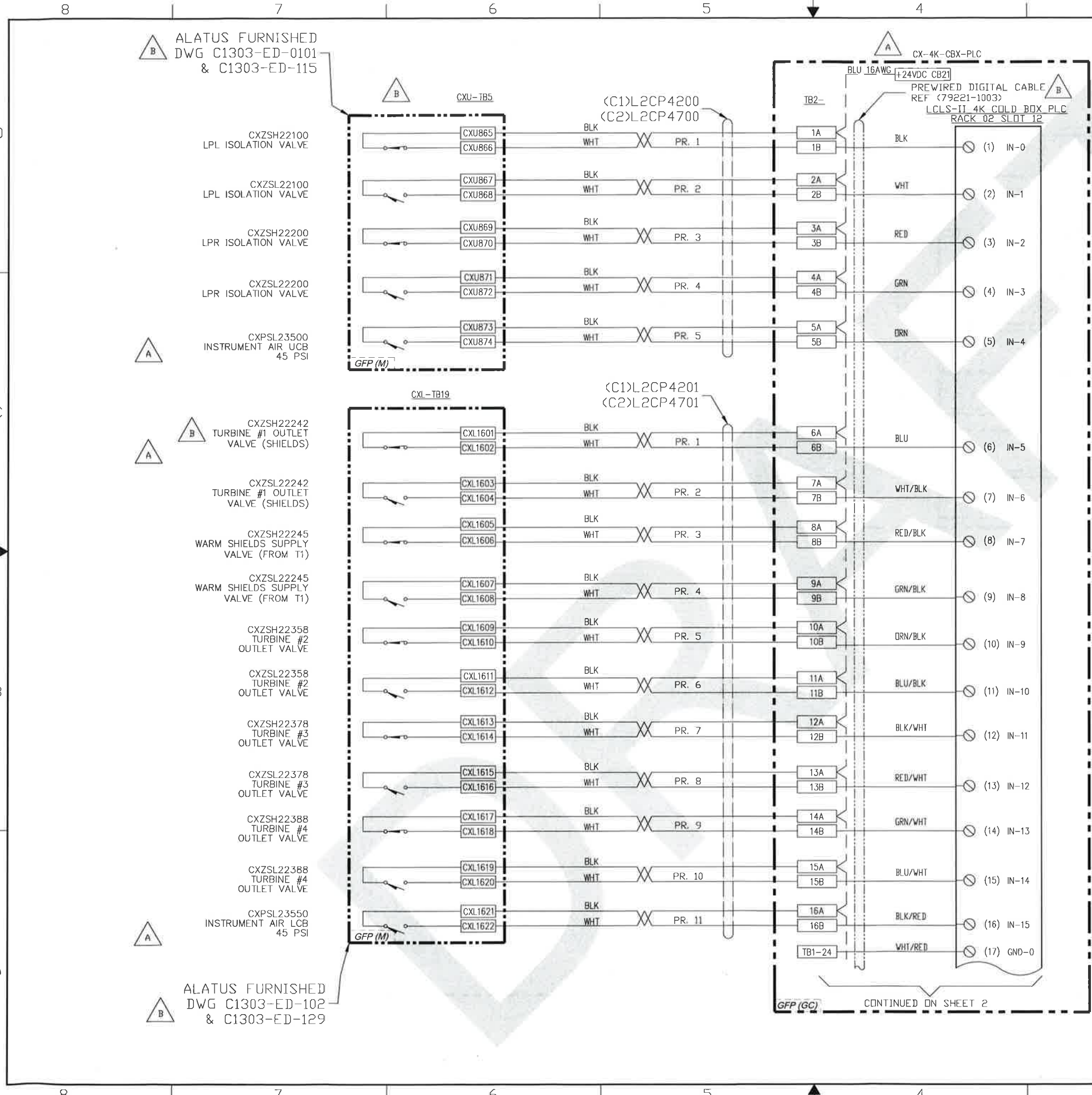
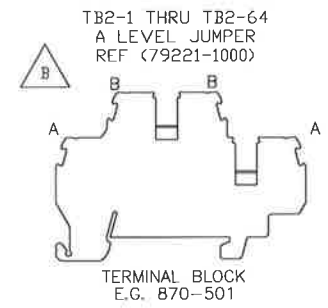


RESTRICTIVE NOTICE: These designs and drawings were prepared by Jefferson Science Associates, LLC, hereinafter "the Contractor," under Contract No. DE-AC05-84OR21400 with the Department of Energy (DOE). All rights in the designs and drawings are reserved by DOE on behalf of the United States Government and the Contractor as provided in the Contract. You are authorized to use these works for Governmental purposes but it is not to be released or distributed to the public. NEITHER THE GOVERNMENT NOR THE CONTRACTOR MAKES ANY WARRANTY, EXPRESS OR IMPLIED, OR ASSUMES ANY LIABILITY FOR THE USE OF THESE DESIGNS OR DRAWINGS. (This notice including this sentence must appear on any copies of these designs or drawings.)



REVISION HISTORY				
ZONE	REV	DESCRIPTION	DATE	APPROVED
ALL	-	INITIAL SUBMITTAL	30AUG17	R. NORTON
SH4 5-A SH1 7-A SH1 7-C SH2 SH3 SH4	A	1. ADDED SIGNAL CONNECTION TO GAS MANAGEMENT ENCLOSURE. 2. CHANGED THE NAME TAGS AND INCLUDED RANGES FOR PRESSURE SWITCHES. 3. REVISED SHEET 2 ENTIRELY (ADDED DETAILS). 4. ADDED DESCRIPTION, REVISED TAGS AND SHIFTED 1 CHANNEL DOWN FROM CH7. 5. 4. ADDED DESCRIPTION, REVISED TAGS AND SHIFTED 1 CHANNEL DOWN FROM CH7.	17NOV17	R. NORTON
VAR SH1 2-C SH1 7-C ALL SH2	B	1. ADDED CABLE REFERENCE. 2. REVISED TERMINAL BLOCK NOTE. 3. REVISED CXZSH22242 CALLOUT. 4. REVISED SWITCH VIEW. 5. ADDED SIGNALS FOR POWER SUPPLY STATUS. 6. ADDED SYMBOLS FOR PRESSURE SWITCHES. 7. CHANGED ENCLOSURE REFERENCING.	27FEB18	R. NORTON
SH3, 4 SH3, 4 SH5, 6 SH2, 3 SH3, 4 SH1 A-1 SH3, 4, 6	C	1. REMOVED ESTOP AND COOLING WATER FAILURE 2. ADDED COOLING WATER FAILURE	25JUL18	R. NORTON
SH3, 4 SH5, 6	C	1. REMOVED ESTOP AND COOLING WATER FAILURE 2. ADDED COOLING WATER FAILURE	25JUL18	R. NORTON
ALL SH2 7-B SH3 5 SH4 5 SH2 4 SH3 6-C SH4 6-C SH5 ALL	D	1. REVISED PRE-WIRED CABLE COLORS. 2. REVISED REFERENCE ENCLOSURE NAME. 3. RENAMED (CPX) TO CPX FOR FIELD CABLE. 4. DELETED TSH23610. 5. DELETED TSH23630. 6. REVISED TAG NAMES. 7. REVISED SHEET ENTIRELY.	01FEB19	R. NORTON



- NOTES**
1. ALL WIRES ARE 20AWG UNLESS OTHERWISE SPECIFIED.
 2. UNLESS OTHERWISE SPECIFIED, ALL FIELD COMPONENTS AND CABLES TO BE INSTALLED BY GENERAL CONTRACTOR.
 3. X IS 1 OR 2 FOR C1 OR C2, RESPECTIVELY.

EACH SHEET OF A MULTI-SHEET DRAWING SHALL ALWAYS CARRY THE SAME REVISION LEVEL

DIN & TOL. PER ASME Y14.5 2009. UNLESS OTHERWISE SPECIFIED DIMENSIONS ARE IN INCHES. TOLERANCES ARE: FRACTIONS DECIMAL ANGLES ± 1/8 .X ± .1 ± .50° .XX ± .01 .XXX ± .005

THIRD ANGLE PROJECTION

FINISH MACHINED SURFACES UNLESS OTHERWISE NOTED DEBURR & BREAK ALL SHARP EDGES

DO NOT SCALE DRAWING

DRAWN T.MCCOOL DATE 30AUG17

MATERIAL NONE

US Department of Energy Office of Science

Jefferson Lab
Thomas Jefferson National Accelerator Facility

Libraries by Jefferson Science Associates, LLC

LCLS II
CRYOGENICS 4K COLD BOX SYSTEM
DISCRETE INPUT PLC MODULE
TERMINATION DETAIL

SIZE DWG. NO. D 79221-1005

REV. D

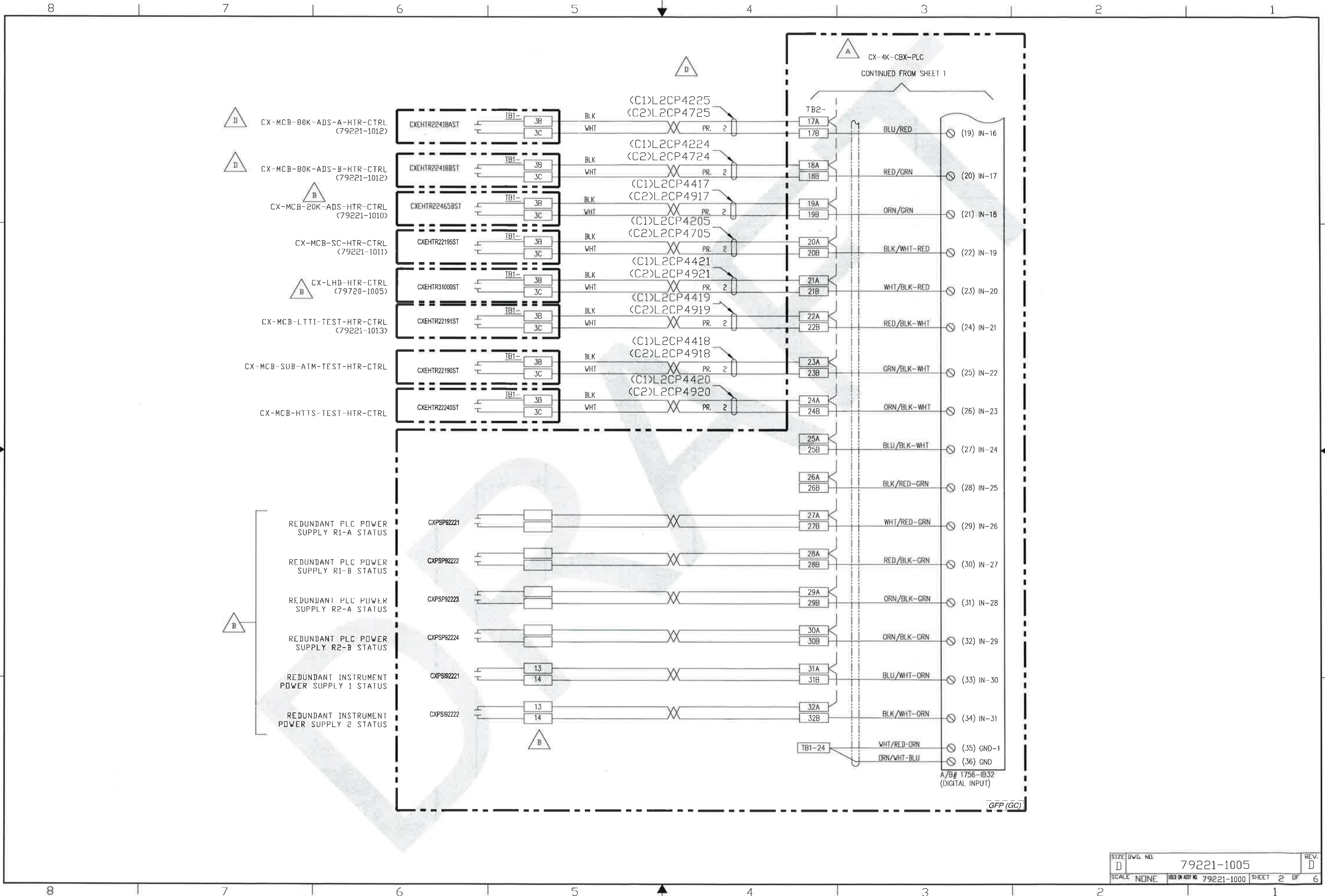
SCALE NONE USED ON ASSY NO. 79221-1000 SHEET 1 OF 6

ALATUS FURNISHED
DWG C1303-ED-0101
& C1303-ED-115

ALATUS FURNISHED
DWG C1303-ED-102
& C1303-ED-129

CONTINUED ON SHEET 2

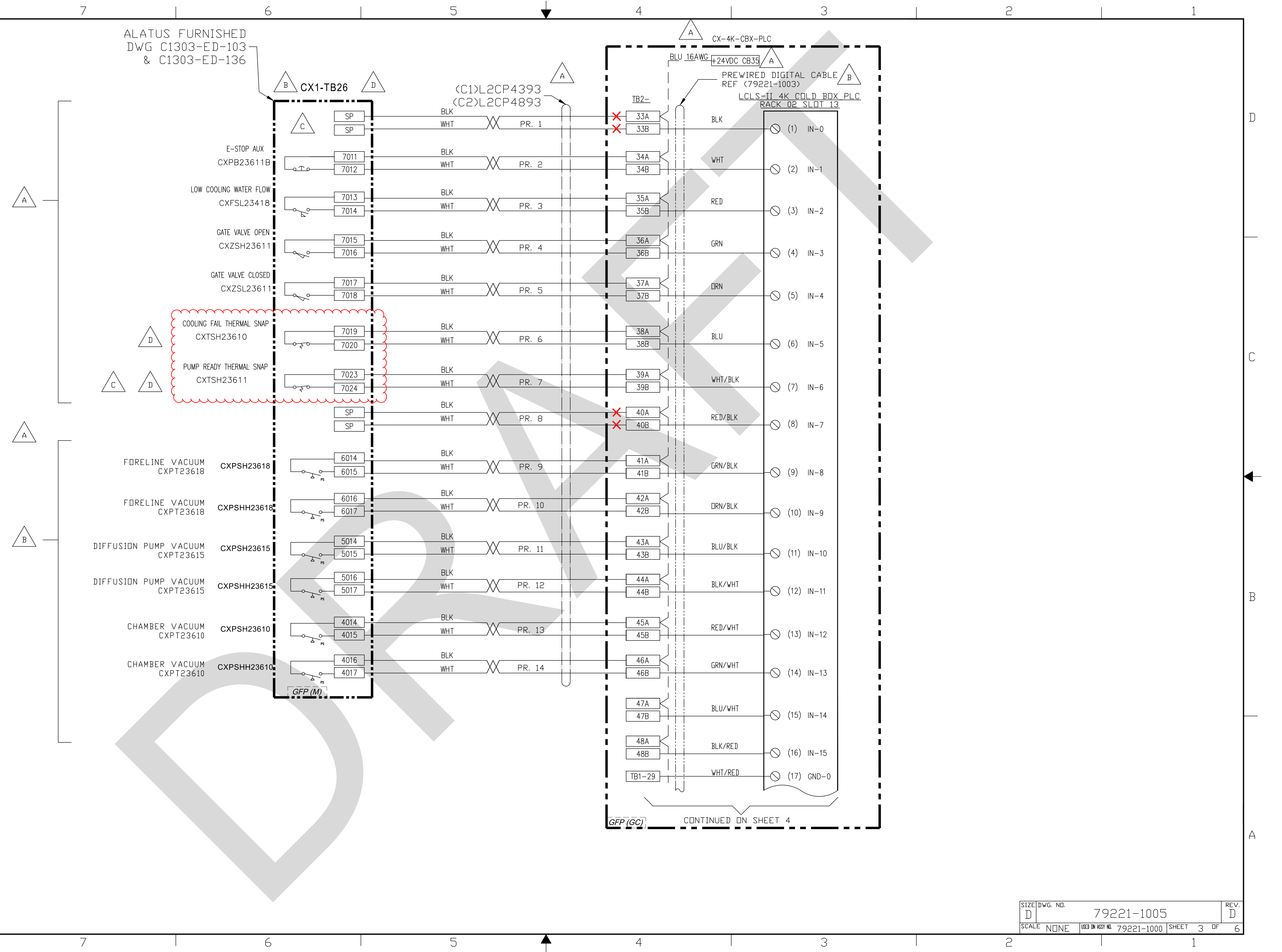
RESTRICTIVE NOTICE: These designs and drawings were prepared by Jefferson Science Associates, LLC, hereinafter the Contractor, under Contract No. DE-AC05-00OR22377 with the Department of Energy (DOE). All rights in the designs and drawings are reserved by DOE, on behalf of the United States Government and the Contractor as provided in the Contract. You are authorized to use these works for Governmental purposes but it is not to be released or distributed to the public. NEITHER THE GOVERNMENT NOR THE CONTRACTOR MAKES ANY WARRANTY, EXPRESS OR IMPLIED, OR ASSUMES ANY LIABILITY FOR THE USE OF THESE DESIGNS OR DRAWINGS. (This notice including this sentence must appear on any copies of these designs or drawings.)



SIZE	DWG. NO.	79221-1005	REV.	D
SCALE	NONE	LOCK IN ASST. NO.	79221-1000	SHEET 2 OF 6

RESTRICTIVE NOTICE: These designs and drawings were prepared by Jefferson Science Associates, LLC, hereinafter the Contractor, under Contract No. DE-AC05-06OR21377 with the Department of Energy (DOE). All rights in the designs and drawings are reserved by DOE, on behalf of the United States Government and the Contractor as provided in the Contract. You are authorized to use these works for Governmental purposes but it is not to be released or distributed to the public. NEITHER THE GOVERNMENT NOR THE CONTRACTOR MAKES ANY WARRANTY, EXPRESS OR IMPLIED, OR ASSUMES ANY LIABILITY FOR THE USE OF THESE DESIGNS OR DRAWINGS. (This notice including this sentence must appear on any copies of these designs or drawings)

ALATUS FURNISHED
DWG C1303-ED-103
& C1303-ED-136



SIZE	DWG. NO.	REV.
D	79221-1005	D
SCALE	USED ON ASSY NO.	SHEET
NONE	79221-1000	3 OF 6

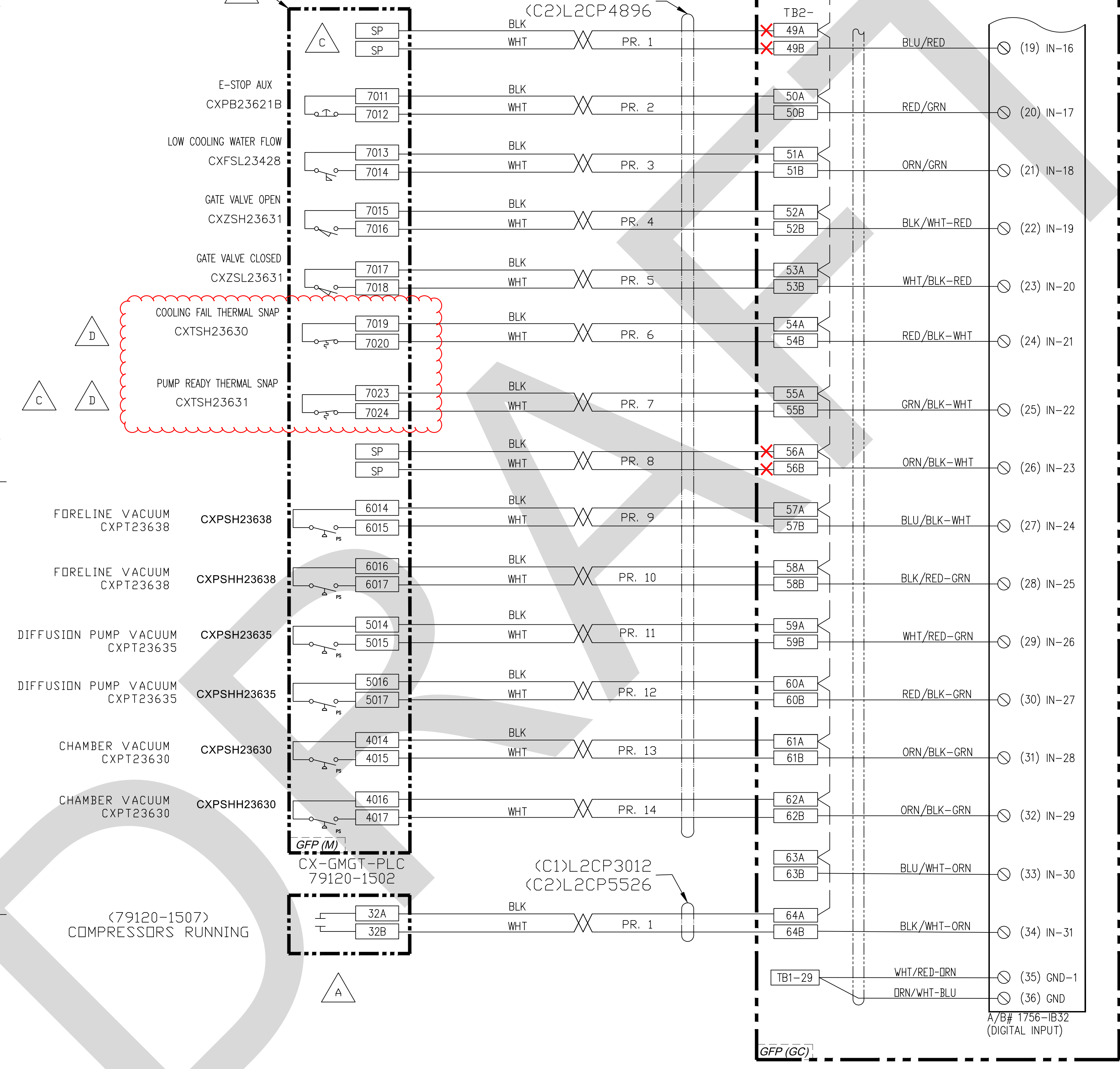
RESTRICTIVE NOTICE: These designs and drawings were prepared by Jefferson Science Associates, LLC, hereinafter the Contractor, under Contract No. DE-AC05-06OR21377 with the Department of Energy (DOE). All rights in the designs and drawings are reserved by DOE on behalf of the United States Government and the Contractor as provided in the Contract. You are authorized to use these works for Governmental purposes but it is not to be released or distributed to the public. NEITHER THE GOVERNMENT NOR THE CONTRACTOR MAKES ANY WARRANTY, EXPRESS OR IMPLIED, OR ASSUMES ANY LIABILITY FOR THE USE OF THESE DESIGNS OR DRAWINGS. (This notice including this sentence must appear on any copies of these designs or drawings)

ALATUS FURNISHED
 DWG C1303-ED-103
 & C1303-ED-136

CX2-TB26

(C1)L2CP4396
 (C2)L2CP4896

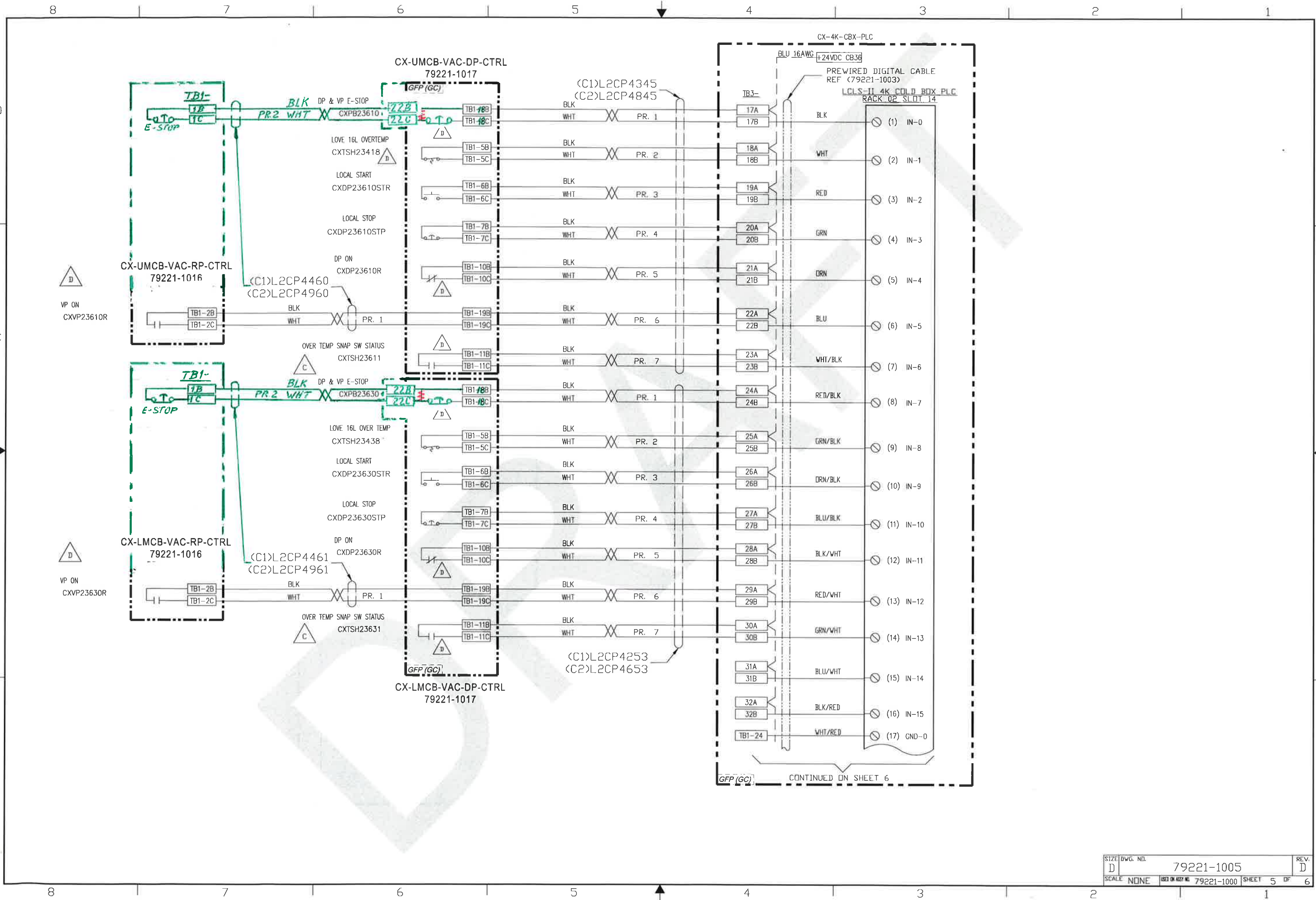
CX-4K-CBX-PLC
 CONTINUED FROM SHEET 3



A/B# 1756-IB32
 (DIGITAL INPUT)

SIZE	DWG. NO.	REV.
D	79221-1005	D
SCALE	USED ON ASSY NO.	SHEET
NONE	79221-1000	4 OF 6

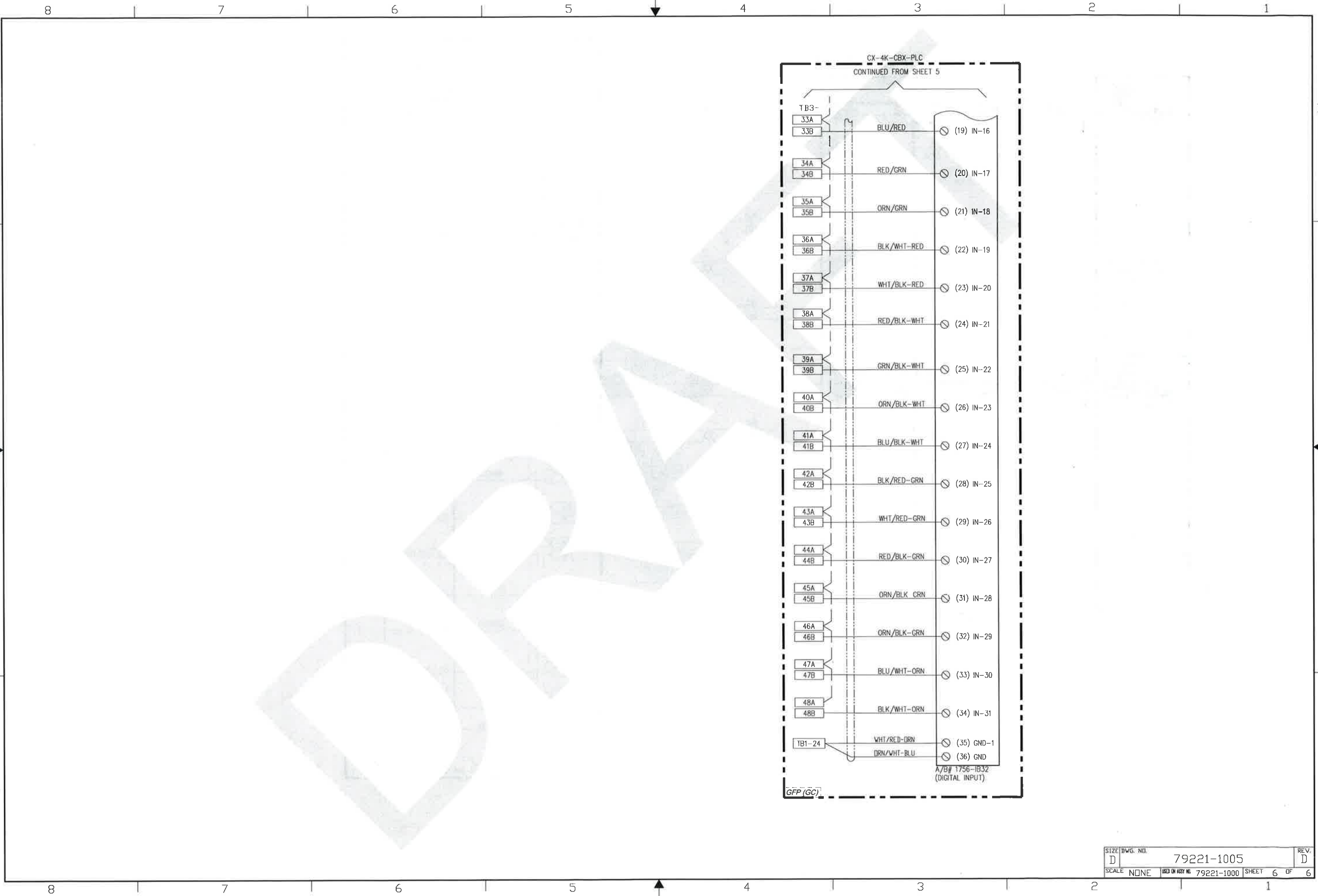
RESTRICTIVE NOTICE: These designs and drawings were prepared by Jefferson Science Associates, LLC, hereinafter the Contractor, under Contract No. DE-AC05-08OR22377 with the Department of Energy (DOE). All rights in the designs and drawings are reserved by DOE, on behalf of the United States Government and the Contractor as provided in the Contract. You are authorized to use these works for governmental purposes but it is not to be released or distributed to the public. NEITHER THE GOVERNMENT NOR THE CONTRACTOR MAKES ANY WARRANTY, EXPRESS OR IMPLIED, OR ASSUMES ANY LIABILITY FOR THE USE OF THESE DESIGNS OR DRAWINGS. THIS NOTICE INCLUDING THIS SENTENCE MUST APPEAR ON ANY COPIES OF THESE DESIGNS OR DRAWINGS.



CONTINUED ON SHEET 6

SIZE	DWG. NO.	REV.
D	79221-1005	D
SCALE	DATE ON ASSY NO.	SHEET
NONE	79221-1000	5 OF 6

RESTRICTIVE NOTICE: These designs and drawings were prepared by Jefferson Science Associates, LLC, hereinafter the Contractor, under Contract No. DE-AC05-84OR21477 with the Department of Energy (DOE). All rights in the designs and drawings are reserved by DOE on behalf of the United States Government and the Contractor as provided in the Contract. You are authorized to use these works for governmental purposes but it is not to be released or distributed to the public. NEITHER THE GOVERNMENT NOR THE CONTRACTOR MAKES ANY WARRANTY, EXPRESS OR IMPLIED, OR ASSUMES ANY LIABILITY FOR THE USE OF THESE DESIGNS OR DRAWINGS. (This notice including this sentence must appear on any copies of these designs or drawings)



SIZE	DWG. NO.	REV.
D	79221-1005	D
SCALE	USED ON ASST. NO.	SHEET
NONE	79221-1000	6 OF 6