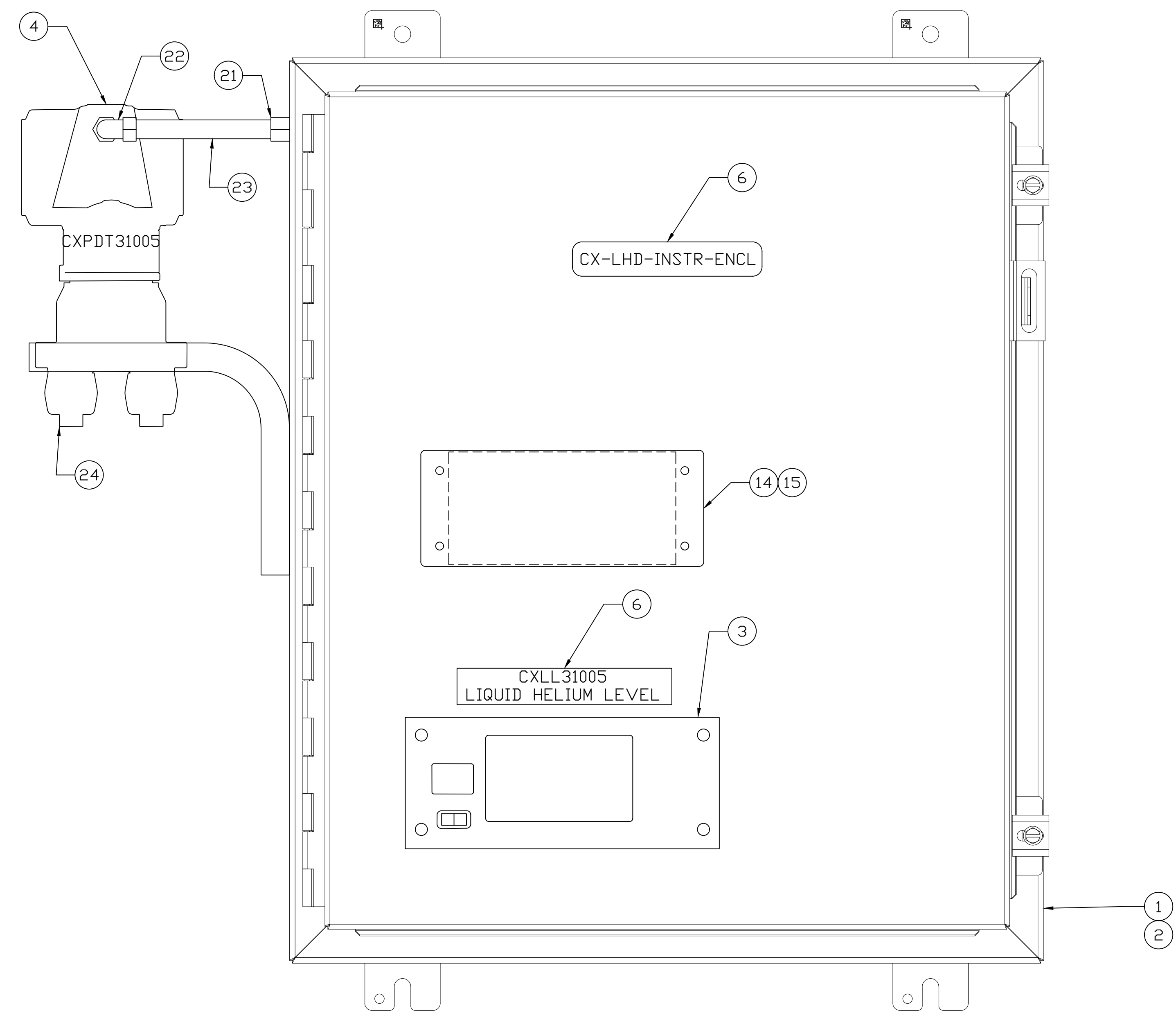


RESTRICTIVE NOTICE: These designs and drawings were prepared by Jefferson Science Associates, LLC, hereinafter the Contractor, under Contract No. DE-AC05-68OR22377 with the Department of Energy (DOE). All rights in the designs and drawings are reserved by DOE on behalf of the United States Government and the Contractor as provided in the Contract. You are authorized to use these works for Governmental purposes but it is not to be released or distributed to the public. NEITHER THE GOVERNMENT NOR THE CONTRACTOR MAKES ANY WARRANTY, EXPRESS OR IMPLIED, OR ASSUMES ANY LIABILITY FOR THE USE OF THESE DESIGNS OR DRAWINGS. (This notice including this sentence must appear on any copies of these designs or drawings.)

8 7 6 5 4 3 2 1

REVISION HISTORY				
ZONE	REV	DESCRIPTION	DATE	APPROVED
ALL	-	INITIAL SUBMITTAL TMM 10OCT17	10OCT17	R. NORTON
SH1 VAR	A	1. REVISED ITEM NO. 1 & 2. 2. REVISED CXDPT TO CXPDT. SS 04FEB19	04FEB19	R. NORTON
SH2 B SH3 C6 SH3	B	1. ADDED CONNECTIONS FOR LL, TCG AND TDS. 2. ADDED MORE TBS. 3. ADDED SH3. CS 02JUL19	02JUL19	R. NORTON



FRONT VIEW

QTY REQD	ITEM NO.	PART OR IDENTIFYING NO.	NOMENCLATURE OR DESCRIPTION	MATERIAL SPECIFICATION	NOTES
1	24	SWAGelok SS-V3NBF8-FL	SS 3-VALVE INSTR MANIFOLD, 1/2" FEMALE NPTX FLANGE (MSS), BALL TIP	-	-
A/R	23	GENERIC	1/2" FLEXIBLE CONDUIT	-	-
1	22	LT5090	LIQUID TIGHT 90° ANGLE CONNECTOR	-	-
1	21	LT50	LIQUID TIGHT STRAIGHT CONNECTOR	-	-
1	20	HOFFMAN DBDXK	DUPLEX OUTLET KIT	-	-
1	19	KJLC3511400Y0	KJLC351 HOT CATHODE IONIZATION GAUGE	-	-
1	18	KJLC3511400Y0	KJLC351 HOT CATHODE IONIZATION GAUGE	-	-
1	17	CB421-1-50F	KJLC275 CONVECTION GAUGE CABLE	USE WITH ITEM 14	-
1	16	BXC400-1-50F	KJLC351 IONIZATION GAUGE CABLE	USE WITH ITEM 14	-
1	15	KJLPS301UA	110AC CORD	USE WITH ITEM 14	NOTE 3
1	14	MGC-3200	VACUUM GAUGE CONTROLLER	-	-
2	13	WAGO 249-116	END STOP	-	-
A/R	12	WAGO 210-112	MOUNTING RAIL	ZINC/STEEL	-
2	11	WAGO 870-568	END BARRIER	-	-
9	10	WAGO 870-551	TERMINALS, THREE TIER	-	-
6	9	SWAGelok CU-4-VCR-2-GR	VCR GASKET	COPPER	-
1	8	SWAGelok SS-4-WVCR-1-4	ADAPTER	-	NOTE 1
1	7	SWAGelok SS-4-VCR-61	BULKHEAD UNION	-	NOTE 1
1	6	GENERIC	LABEL, ENGRAVED OR PRINTED	TEXT AS SHOWN	NOTE 2
1	5	GE UNIK 5000 PTX5072-TB-A1-CA-H0-PE	PRESSURE TRANSMITTER, 100 PSIA	-	NOTE 1
1	4	ROSEMOUNT 3051CD2A02A1AH2B2Q4	DIFFERENTIAL PRESSURE TRANSDUCER	-	-
1	3	AMERICAN MAGNETICS 1700-SR10L-N-N-HVHe4K-S	LIQUID HELIUM LEVEL INSTRUMENT	-	NOTE 3
1	2	SAGINAW CONTROL SCE-24P20	PANEL FOR ENCLOSURE	-	-
1	1	SAGINAW CONTROL SCE-24H2016LP	ENCLOSURE	-	-

PARTS LIST

EACH SHEET OF A MULTI-SHEET DRAWING SHALL ALWAYS CARRY THE SAME REVISION LEVEL

UNLESS OTHERWISE SPECIFIED DIMENSIONS ARE IN INCHES. TOLERANCES ARE:

FRACTIONS	DECIMAL	ANGLES
± 1/8	.X ± .01	± .50°
	.XX ± .01	
	.XXX ± .005	

THIRD ANGLE PROJECTION

FINISH MACHINED SURFACES DEBURR & BREAK ALL SHARP EDGES

N/A UNLESS OTHERWISE NOTED

DO NOT SCALE DRAWING

DATE 30AUG17

DRAWN T.MCCOOL

U.S. Department of Energy Office of Science

Jefferson Lab
Thomas Jefferson National Accelerator Facility

Operated by Jefferson Science Associates, LLC

LCLS II
4K COLD BOX SYSTEM
10kL LHe DEWAR INSTRUMENT ENCLOSURE ASSEMBLY

SIZE DWG. NO. D 79720-1003

SCALE NONE USED IN ASSY NO N/A

SHEET 1 OF 3

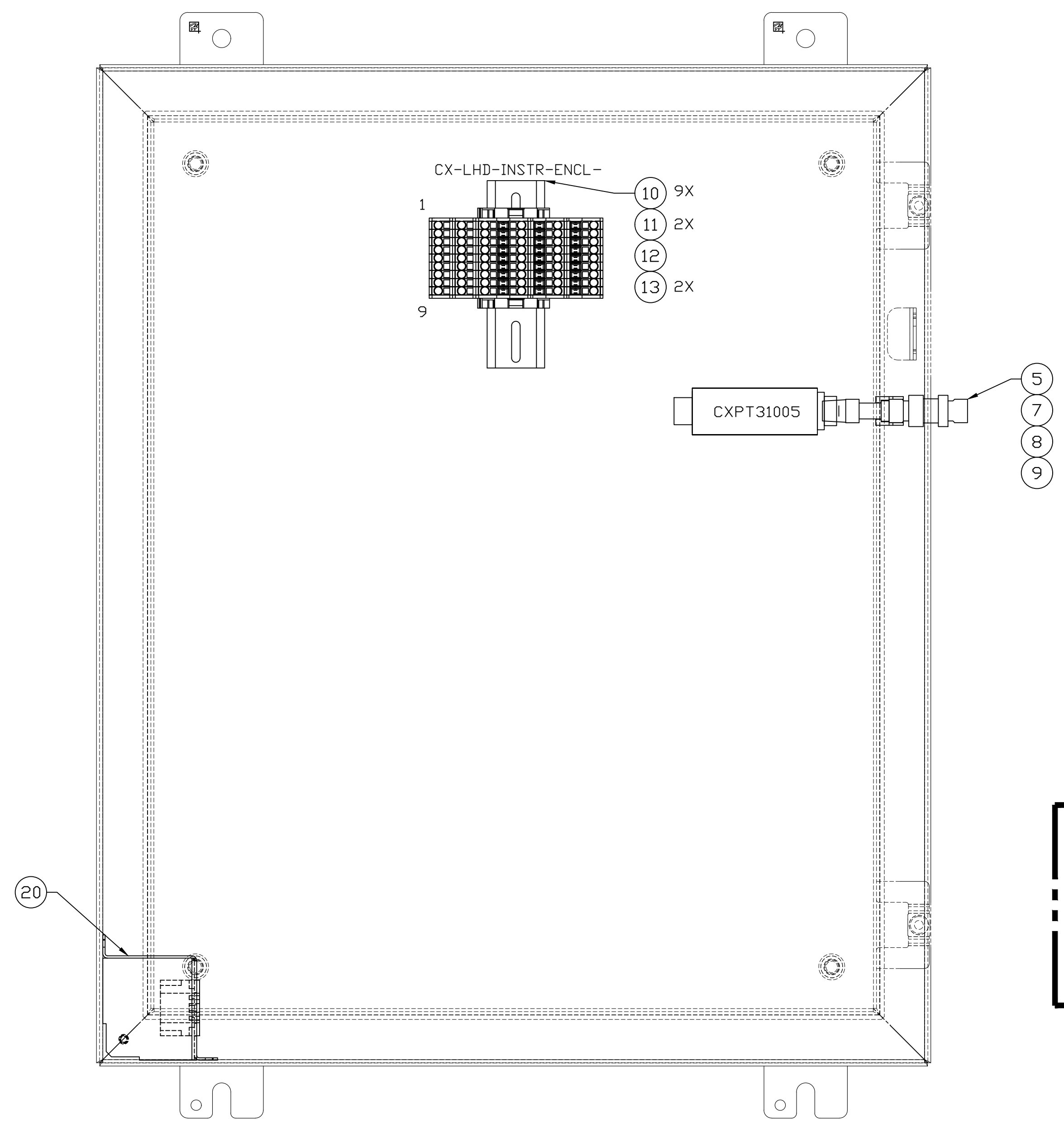
REV. B

- NOTES:
1. USE SCOTCHWELD 3M #1838 TO SEAL NPT FITTINGS USED IN PROCESS CONNECTIONS.
 2. WHERE NEEDED USE HARDMAN #4001 (OR EQUAL) TO ADHERE LABELS.
 3. PLUGGED INTO DUPLEX RECEPTACLE ITEM NO 20.

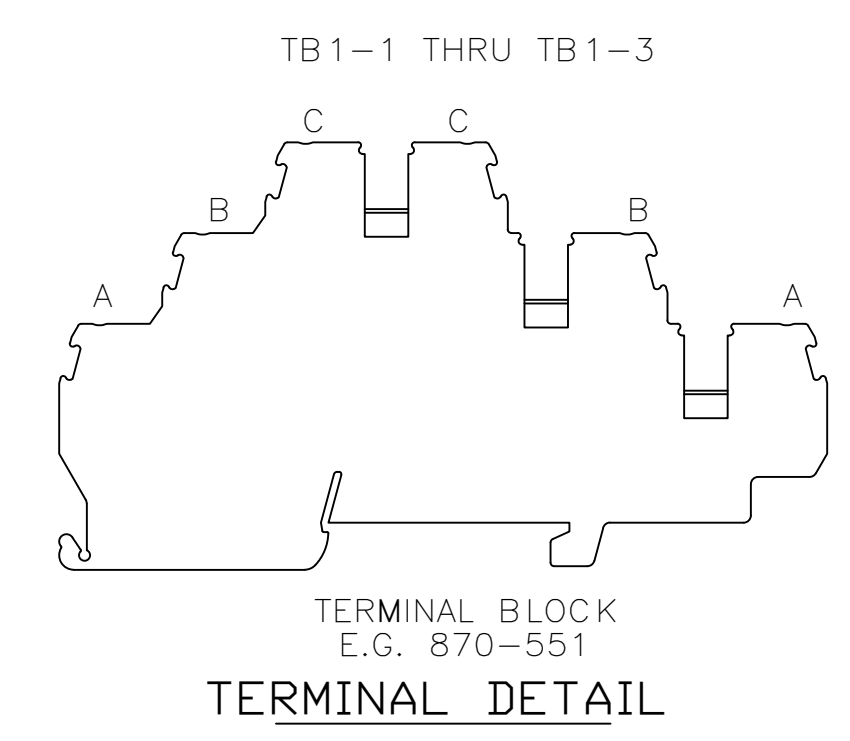
8 7 6 5 4 3 2 1

RESTRICTIVE NOTICE: These designs and drawings were prepared by Jefferson Science Associates, LLC, hereinafter the Contractor, under Contract No. DE-AC05-68OR21470 with the Department of Energy (DOE). All rights in the designs and drawings are reserved by DOE on behalf of the United States Government and the Contractor as provided in the Contract. You are authorized to use these works for Governmental purposes but it is not to be released or distributed to the public. NEITHER THE GOVERNMENT NOR THE CONTRACTOR MAKES ANY WARRANTY, EXPRESS OR IMPLIED, OR ASSUMES ANY LIABILITY FOR THE USE OF THESE DESIGNS OR DRAWINGS. (This notice including this sentence must appear on any copies of these designs or drawings.)

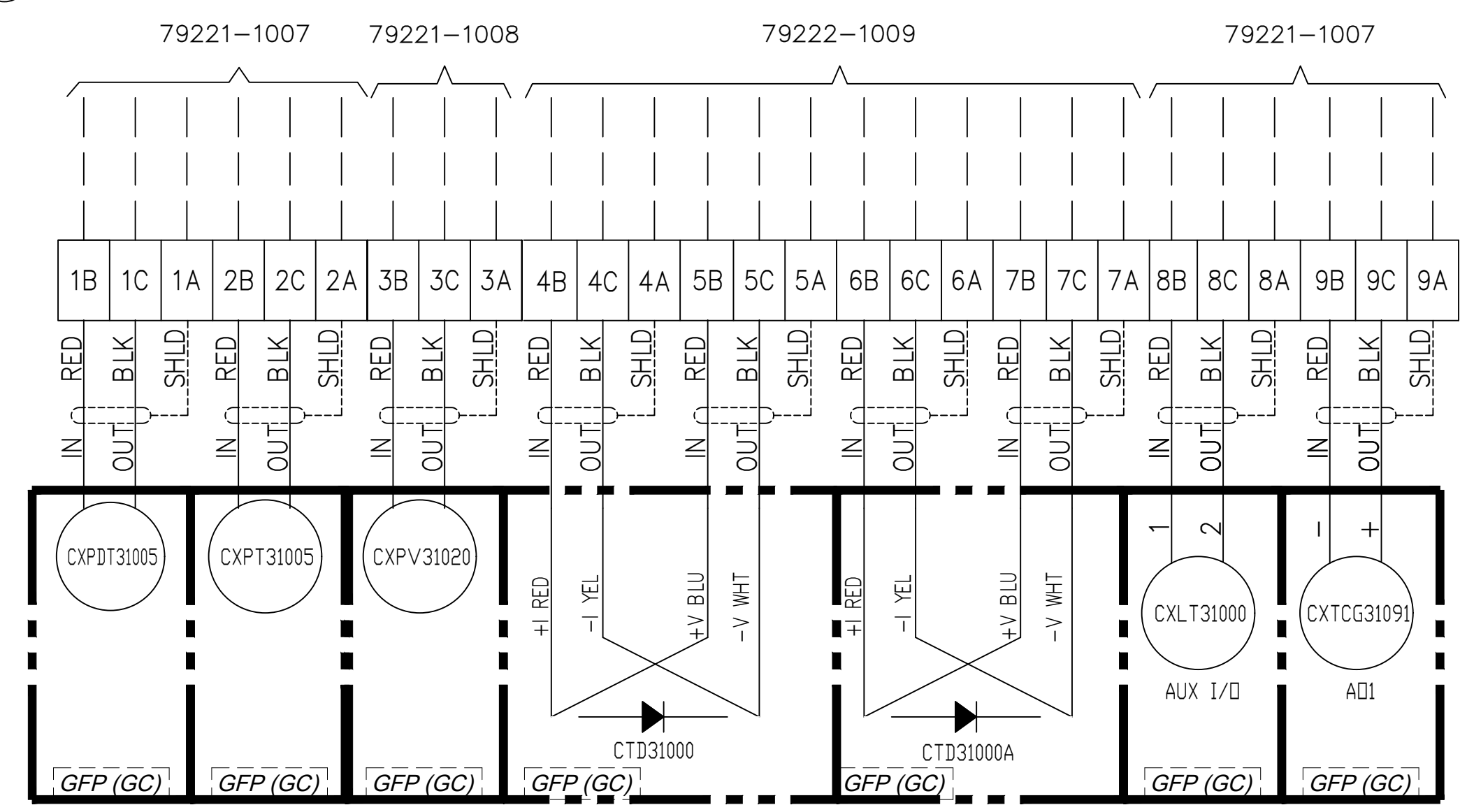
8 7 6 5 4 3 2 1



INSIDE VIEW



TERMINAL DETAIL

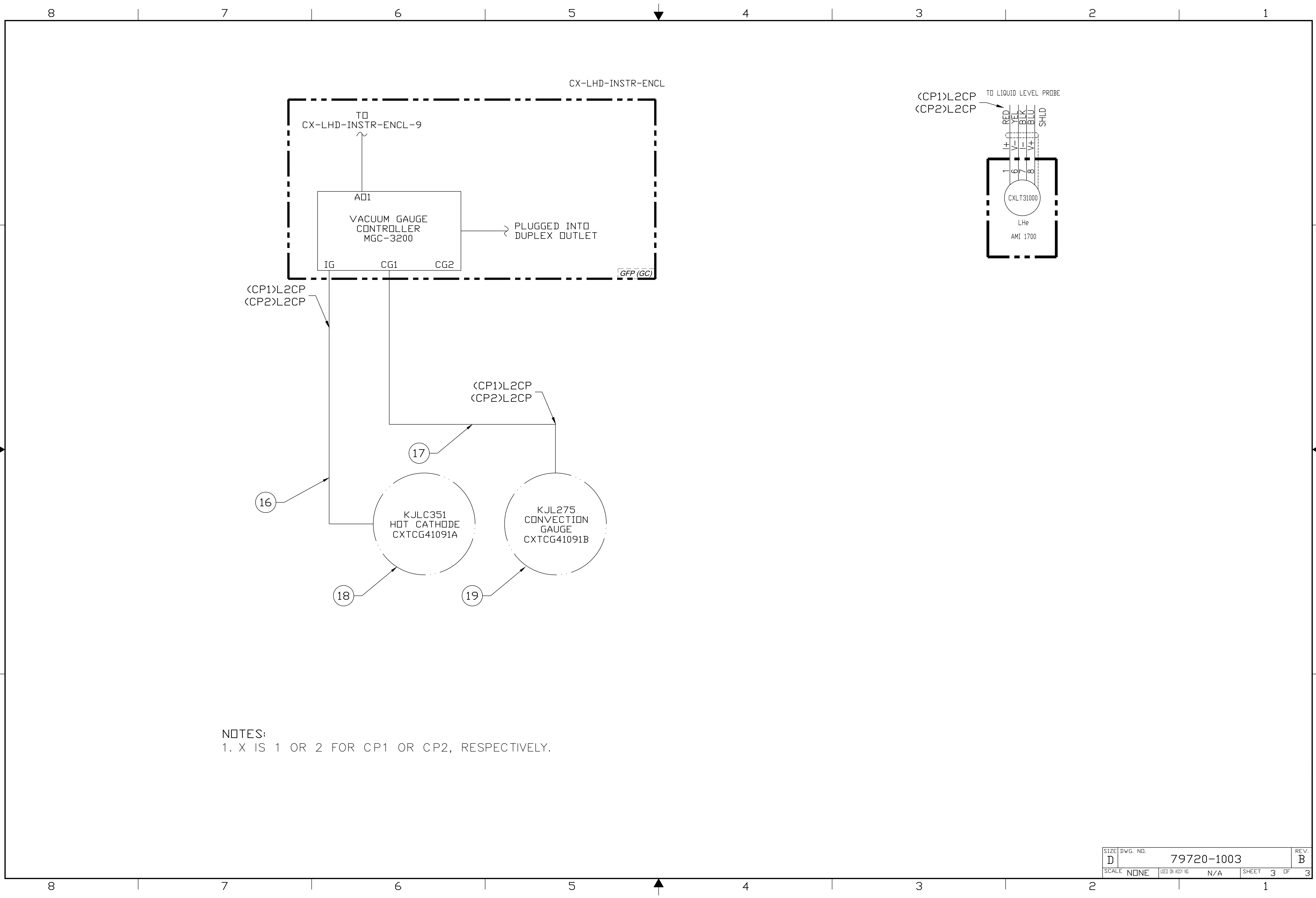


SCHEMATIC

8 7 6 5 4 3 2 1

SIZE	DWG. NO.	REV.
D	79720-1003	B
SCALE	USED ON ASSY NO.	SHEET
NONE	N/A	2 OF 3

RESTRICTIVE NOTICE: These designs and drawings were prepared by Jefferson Science Associates, LLC, hereinafter the Contractor, under Contract No. DE-AC05-68OR21470 with the Department of Energy (DOE). All rights in the designs and drawings are reserved by DOE on behalf of the United States Government and the Contractor as provided in the Contract. You are authorized to use these works for Governmental purposes but it is not to be released or distributed to the public. NEITHER THE GOVERNMENT NOR THE CONTRACTOR MAKES ANY WARRANTY, EXPRESS OR IMPLIED, OR ASSUMES ANY LIABILITY FOR THE USE OF THESE DESIGNS OR DRAWINGS. (This notice including this sentence must appear on any copies of these designs or drawings.)



NOTES:
 1. X IS 1 OR 2 FOR CP1 OR CP2, RESPECTIVELY.

SIZE	D	DWG. NO.	79720-1003	REV.	B
SCALE	NONE	USED ON ASSY NO.	N/A	SHEET	3 OF 3