

**Lower CB Subcooler Heaters Wiring Diagram  
(15-5032-1435-A)**

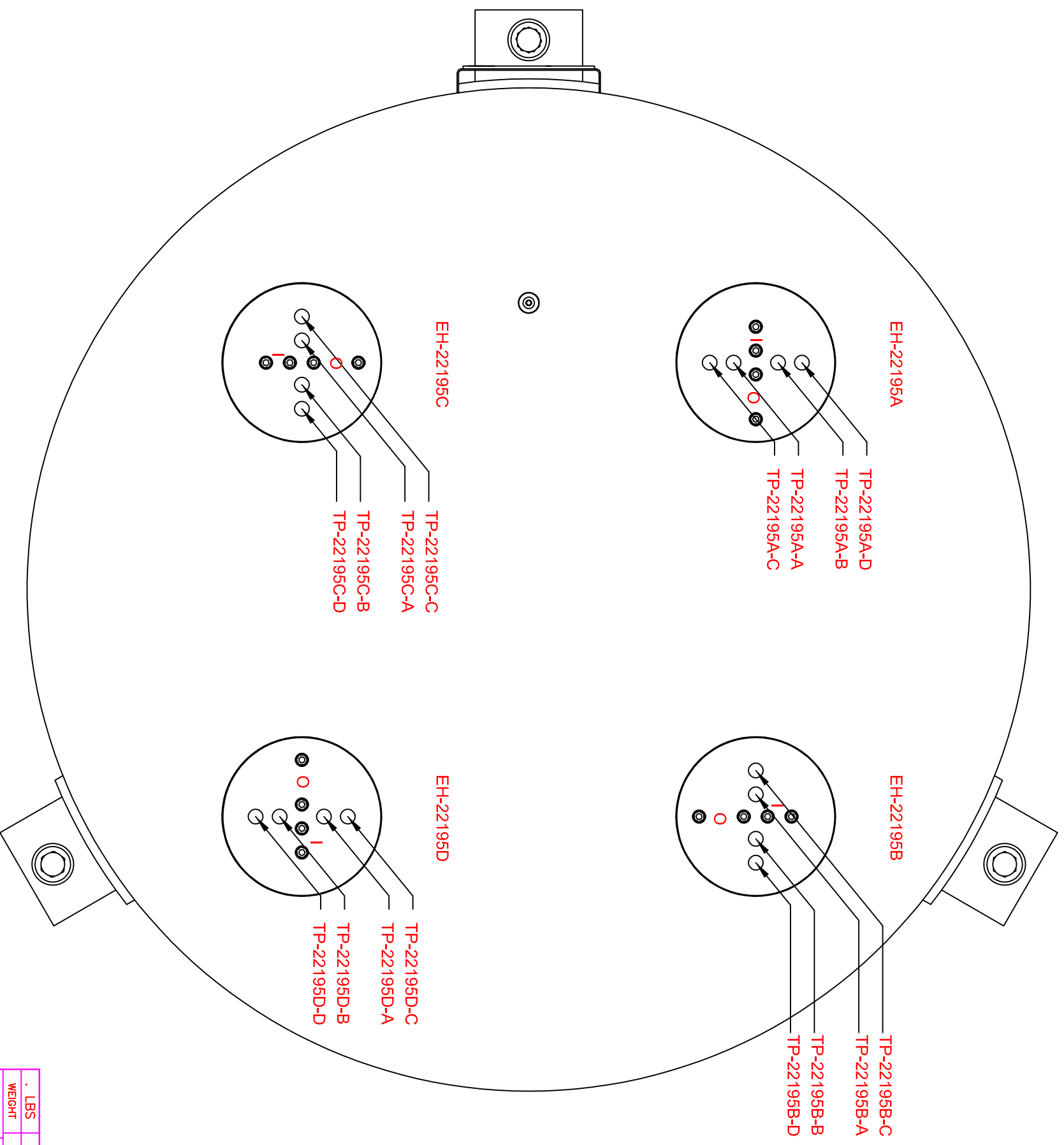
<p><b>Written by:</b> Cold Box Manufacturer: <b>PHPK</b></p>	<p><b><u>Distribution :</u></b></p> <p><b>JLAB</b> <b>AL project team</b></p>
<p><b>Reviewed by</b> Technical Manager: <b>Gilles Flavien</b> <a href="mailto:gilles.flavien@airliquide.com">gilles.flavien@airliquide.com</a></p>	

**MODIFICATIONS RECORDING**

ISSUE OF MODIF	DATE	WRITTEN BY	CHECKED BY	EVOLUTION OF THE DOCUMENT (Updated pages)	JUSTIFICATION OF THE MODIFICATION
<p>Note: Recording of modifications are included in document</p>					

# REVISIONS

CHG.	DATE	DWN.	CH'KD.	ENGR.	REV'D	DESCRIPTION



I= INNER ELEMENT  
O= INNER ELEMENT

LBS	WEIGHT	WORK ORDER	CONTRACT NO.	PART NUMBER	NO. REQ'D	NEXT ASSEMBLY	SIZE

TITLE	REL. DATE	SCALE
LOWER COLD BOX SUBCOOLER HEATER WIRING	8/30/2016	B

DRAWN	MAA	TOLERANCES
SPW <td></td> <td></td>		

CHECKED	SPW	FRACTION
MAA		:XX

ENGINEER	MAA	XXX
SPW		

REVIEWED	SPW	ANGULAR

REL. DATE	8/30/2016

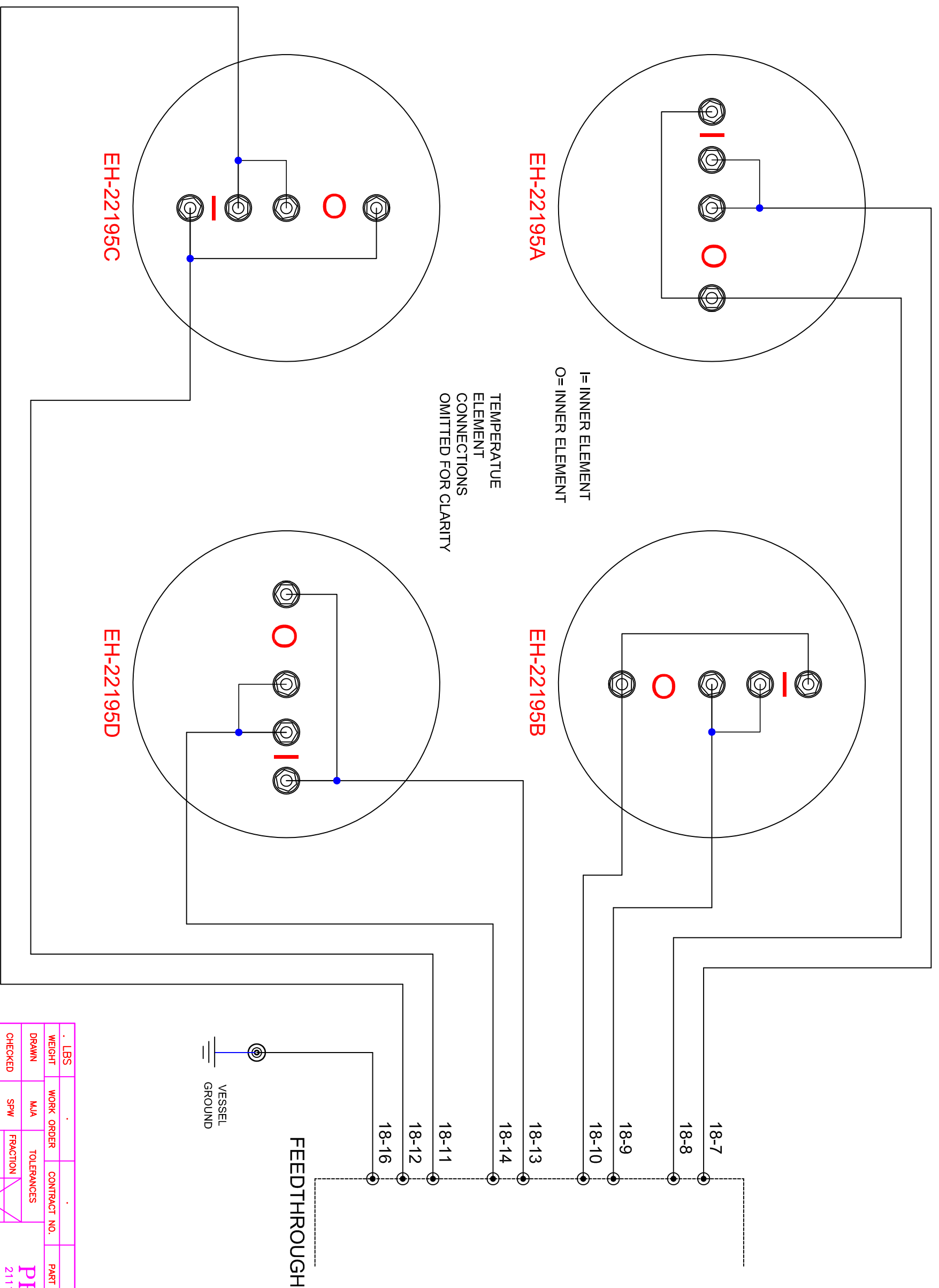
SIZE	DRAWING NO.	CHG.
B	15-5032-1435	A

INFORMATION SHOWN ON THIS DRAWING IS PROPRIETARY AND THE SOLE PROPERTY OF PHPK AND IS NOT TO BE DISCLOSED OR TRANSMITTED TO UNAUTHORIZED PARTIES.

DIMENSIONS ARE PROVIDED PRIOR TO SURFACE TREATMENTS UNLESS NOTED.

# REVISIONS

CHG.	DATE	DWN.	CH'KD.	ENGR.	REV'D	DESCRIPTION



LBS	WORK ORDER	CONTRACT NO.	PART NUMBER	NO. REV'D	NEXT ASSEMBLY	SIZE
WEIGHT	MVA	TOLERANCES	<b>PHPK TECHNOLOGIES</b> 2111 BUILDERS PLACE COLUMBUS, OHIO 43204			
DRAWN	SPW	FRACTION	LCLS II LOWER COLD BOX SUBCOOLER HEATER WIRING			
CHECKED	MVA	XX	TITLE LOWER COLD BOX SUBCOOLER HEATER WIRING			
ENGINEER	SPW	ANGULAR	SIZE B			
REVIEWED			DRAWING NO. 15-5032-1435			
REL. DATE	8/30/2016		CHG. A			
DIMENSIONS ARE PROVIDED PRIOR TO SURFACE TREATMENTS UNLESS NOTED.						

INFORMATION SHOWN ON THIS DRAWING IS PROPRIETARY AND THE SOLE PROPERTY OF PHPK AND IS NOT TO BE DISCLOSED OR TRANSMITTED TO UNAUTHORIZED PARTIES.