

## Vacuum System Granville-Phillips

### Remote Enclosure (TB30-31)

### (15-5032-1440 A)

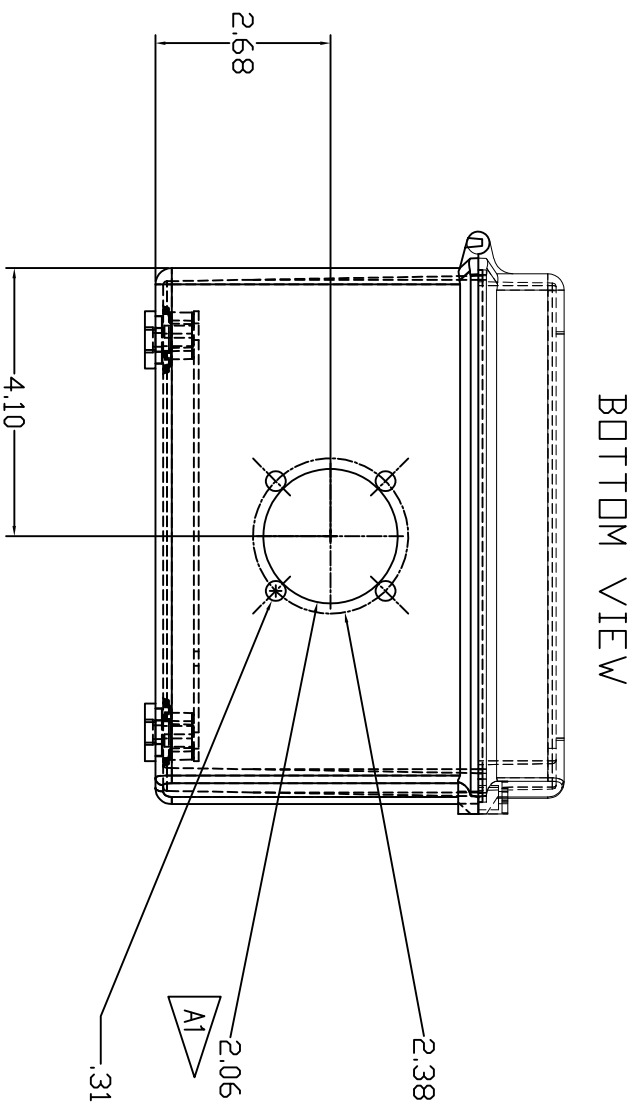
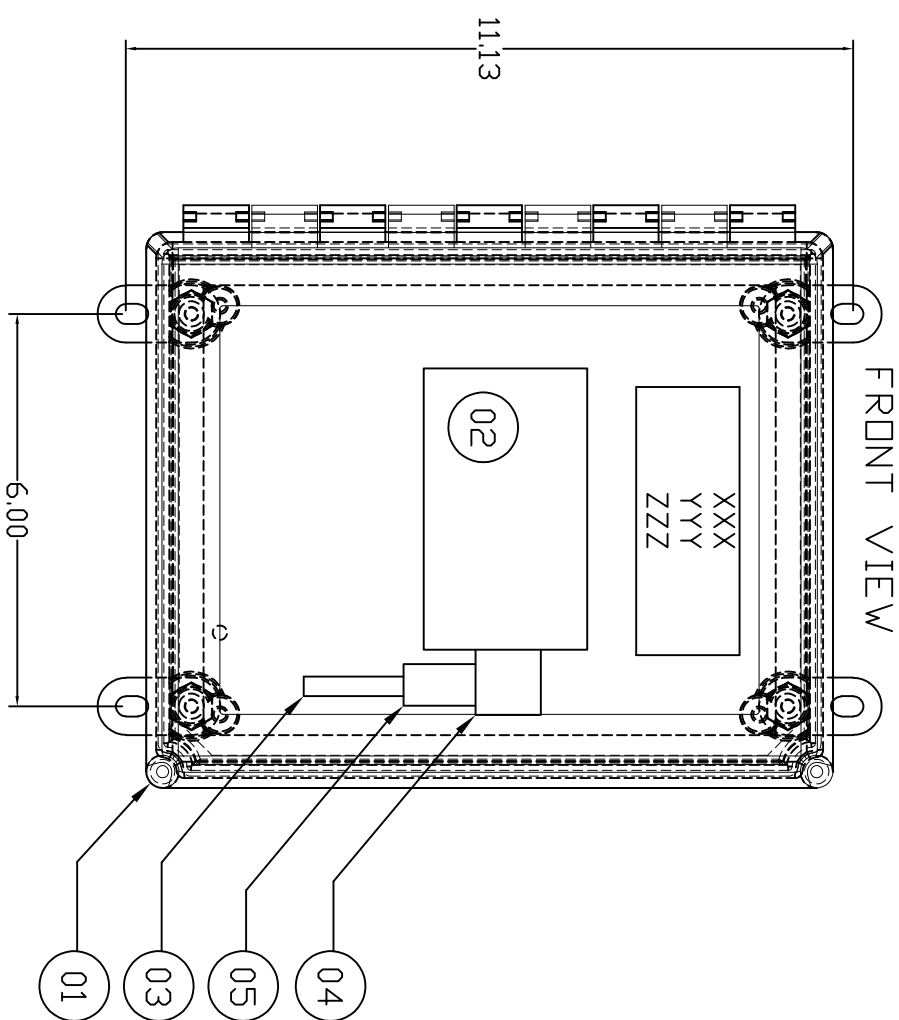
<b>Written by:</b> Cold Box Manufacturer: <b>PHPK</b>	<u><b>Distribution :</b></u>  <b>JLAB</b> <b>AL project team</b>
<b>Reviewed by</b> Technical Manager: <b>Gilles Flavien</b> <a href="mailto:gilles.flavien@airliquide.com">gilles.flavien@airliquide.com</a>	

## MODIFICATIONS RECORDING

ISSUE OF MODIF	DATE	WRITTEN BY	CHECKED BY	EVOLUTION OF THE DOCUMENT (Updated pages)	JUSTIFICATION OF THE MODIFICATION
Note: Recording of modifications are included in document					

REVISIONS

CHG.	DATE	DWN.	CH'KD.	ENGR.	REV'D	DESCRIPTION
A	3/22/2018	CAD	HAS	SPW	CAF	1) CHANGED HOLE SIZE, 2.06 WAS 1.75.



TB-30,31

NOTES:

1. FOUR TAGS (4) WEATHERPROOF, BLACK LETTERS, WHITE BACKGROUND ENGRAVED FIRST LINE REPLACES XXX:

- 1. "C1U-TB30"
- 2. "C2U-TB30"
- 3. "C1L-TB30"
- 4. "C2L-TB30"
- 5. "C1U-TB31"
- 6. "C2U-TB31"
- 7. "C1L-TB31"
- 8. "C2L-TB31"

SECOND LINE REPLACES YYY:

- 1. "DIFFUSION VACUUM"
- 2. "DIFFUSION VACUUM"
- 3. "DIFFUSION VACUUM"
- 4. "DIFFUSION VACUUM"
- 5. "FORELINE VACUUM"
- 6. "FORELINE VACUUM"
- 7. "FORELINE VACUUM"
- 8. "FORELINE VACUUM"

THIRD LINE REPLACES ZZZ:

- 1. "VE-C1U13"
- 2. "VE-C2U13"
- 3. "VE-C1L13"
- 4. "VE-C2L13"
- 5. "VE-C1U20"
- 6. "VE-C2U20"
- 7. "VE-C1L20"
- 8. "VE-C2L20"

INFORMATION SHOWN ON THIS DRAWING IS PROPRIETARY AND THE SOLE PROPERTY OF PHPK AND IS NOT TO BE DISCLOSED OR TRANSMITTED TO UNAUTHORIZED PARTIES.

WEIGHT	WORK ORDER	CONTRACT NO.	PART NUMBER	NO. REQ'D	NEXT ASSEMBLY	SIZE
. LBS						
DRAWN	MJA	TOLERANCES	<b>PHPK TECHNOLOGIES</b>			
CHECKED	SPW	FRACTION	2111 BUILDERS PLACE COLUMBUS, OHIO 43204			
ENGINEER	MJA	XX	LCLS II VACUUM SYSTEM			
REVIEWED	SPW	ANGULAR	TB-30,31 GRANVILLE-PHILLIPS REMOTE ENCLOSURE			
REL. DATE	11/9/2016		SIZE	DRAWING NO.	CHG.	
			B	15-5032-1440	A	
DIMENSIONS ARE PROVIDED PRIOR TO SURFACE TREATMENTS UNLESS NOTED.			SCALE	NONE	SHEET	1 OF 2

REVISIONS

CHG.	DATE	DWN.	CH'KD.	ENGR.	REV'D	DESCRIPTION
X	XX/XX/XX	XXX	XXX	XXX	-	

NO. REQ'D.	P.D. NUMBER	ITEM	PART NUMBER	DESCRIPTION	TAG
-1		01	COM'L	ELECTRICAL ENCLOSURE - 'HOFFMAN' A1086CHSCFGW	
1		02	COM'L	VACUUM GAUGE, GRANVILLE PHILLIPS 275912-EU (NW25KF FLANGE)	
1		03	COM'L	CABLE, 22 AWG, 9C, SHIELDED,, ALPHA 1299C DR =	
1		04	COM'L	90 DEGREE CONNECTOR, L-CDM, #DG90H15MF2	
1		05	COM'L	15 PIN 'D' SHELL CONNECTOR, HIGH DENSITY SUPPLIED WITH ITEM #18	
1		06	COM'L	PLASTIC BLACK ON WHITE TAGS SIZED TO FIT, ENGRAVED AS SHOWN	
		07	COM'L		
		08	COM'L		

INFORMATION SHOWN ON THIS DRAWING IS PROPRIETARY AND THE SOLE PROPERTY OF PHPK AND IS NOT TO BE DISCLOSED OR TRANSMITTED TO UNAUTHORIZED PARTIES.

. LBS	WEIGHT	WORK ORDER	CONTRACT NO.	PART NUMBER	NO. REQ'D	NEXT ASSEMBLY	SIZE
	DRAWN	MJA	TOLERANCES	<b>PHPK TECHNOLOGIES</b> 2111 BUILDERS PLACE COLUMBUS, OHIO 43204 LCIS II VACUUM SYSTEM TB-30,31 GRANVILLE-PHILLIPS REMOTE ENCLOSURE			
	CHECKED	SPW	FRACTION	SIZE	DRAWING NO.	CHG.	
	ENGINEER	MJA	.XX	B	15-5032-1440	A	
	REVIEWED	SPW	.XXX	SCALE	NONE		
	REL. DATE	11/9/2016	ANGULAR	SHEET	2 OF 2		

DIMENSIONS ARE PROVIDED PRIOR TO SURFACE TREATMENTS UNLESS NOTED.